

LOC/DME I-TUT 110.3 Chan 40	APP CRS 046°	Rwy Idg TDZE 32 Apt Elev 32	8999
---	------------------------	---	-------------

ILS or LOC RWY 5

PAGO PAGO INTL (PPG) (NSTU)

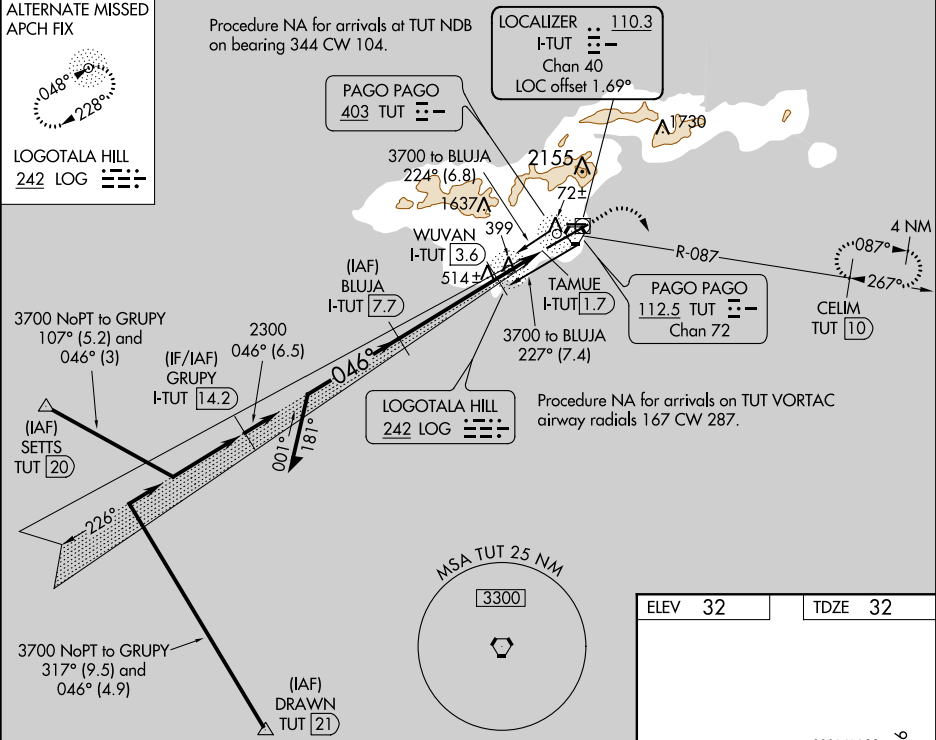
DME required.

▼ When local altimeter setting not received, procedure NA. Circling NA northwest of Rwy 5-23. Rwy 5 helicopter visibility reduction below ¾ SM NA. For inop ALS, increase S-ILS 5 all Cats visibility to 2½ SM; increase S-LOC 5 Cat B visibility to 1¼ SM and Cats C/D to 2 SM. Inop table does not apply to S-LOC 5 Cat A.

MALSR

MISSED APPROACH: Climb to 1100 then climbing right turn to 3000 on TUT VORTAC R-087 to CELIM/TUT 10 DME and hold.

AWOS-3PT 127.925	FALEOLO APP CON 118.1 6.553 (HF)	CTAF 122.9	118.3
----------------------------	--	----------------------	--------------



Use I-TUT DME when on the localizer course.

Remain within 10 NM

2500

226°

046°

GS 3.25°
TCH 54

2300

*840

4.1 NM

1.9 NM

0.4

BLUJA
I-TUT [7.7]

1100

3000

CELIM
TUT [10]

*LOC only

WUVAN
I-TUT [3.6]

TAMUE
I-TUT [1.7]

CATEGORY	A	B	C	D
S-ILS 5		845-1½	813 (900-1½)	
S-LOC 5	780-1	748 (800-1)	780-1¾	748 (800-1¾)
CIRCLING	780-1 748 (800-1)	780-1¼ 748 (800-1¼)	820-2¼ 788 (800-2¼)	860-2¾ 828 (900-2¾)

