

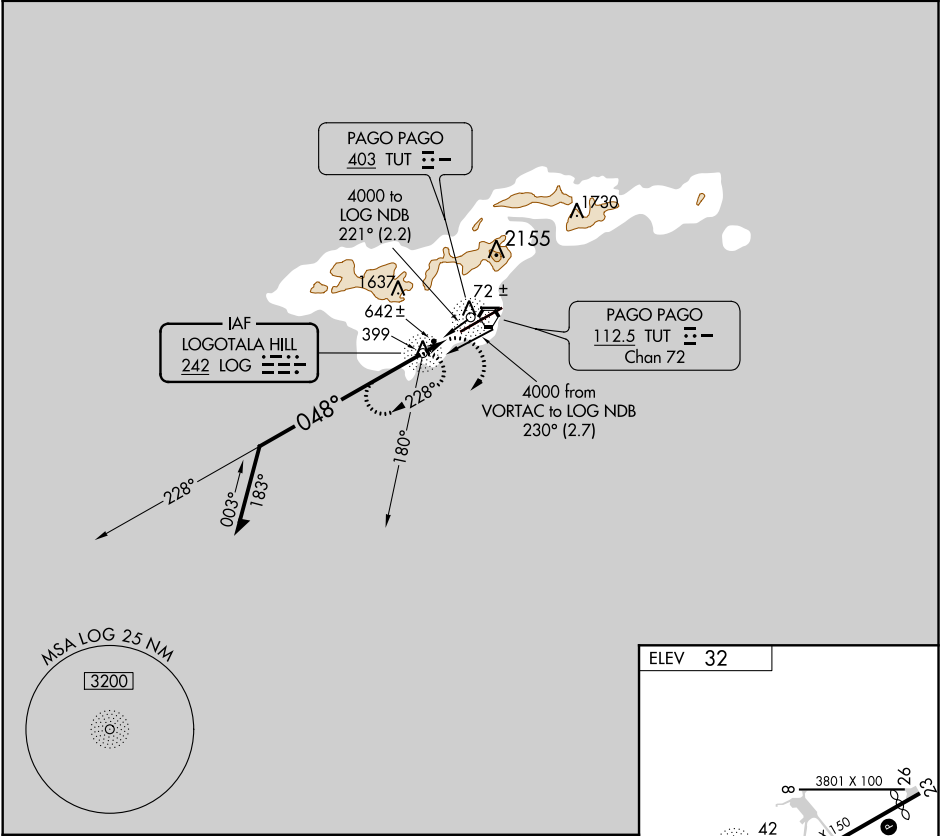
NDB LOG <b>242</b>	APP CRS <b>048°</b>	Rwy Idg TDZE Apt Elev	N/A N/A <b>32</b>
-----------------------	------------------------	-----------------------------	-------------------------

NDB-C

PAGO PAGO INTL (PPG) (NSTU)

<b>▼</b> <b>▲</b>	Circling NA northwest of Rwy 5-23. When local altimeter setting not received, procedure NA.	MISSED APPROACH: Climbing right turn to 4000 via 180° bearing from LOG NDB then direct LOG NDB and hold.
----------------------	--	--

AWOS-3PT <b>127.925</b>	FALEOLO APP CON <b>118.1 6.553(HF)</b>	CTAF <b>122.9</b>	<b>118.3 0</b>
----------------------------	---	----------------------	----------------



<div><div>Remain within 10 NM</div><div>2500</div><div>228°</div><div>048°</div><div>LOG NDB</div><div>1100</div><div>Maintain 3200 or above until established outbound for procedure turn.</div><div>1 NM</div><div>0.8 NM</div></div>					<div><div>4000</div><div>LOG</div><div>180°</div></div>		<div><div>101±</div><div>10001</div><div>0.4% DOWN</div><div>048° 1.8 NM from FAF</div><div>HIRL Rws 5-23 and 8-26</div></div>				
CATEGORY	A	B	C	D	FAF to MAP 1 NM						
CIRCLING	760-1 728 (800-1)		760-2 728 (800-2)	760-2¼ 728 (800-2¼)	Knots	60	90	120	150	180	
					Min:Sec	1:00	0:40	0:30	0:24	0:20	

NDB-C