

APP CRS	Rwy ldg	8999
047°	TDZE	32
	Apt Elev	32

RNAV (GPS) RWY 5

PAGO PAGO INTL (PPG) (NSTU)

RNP APCH.

▼

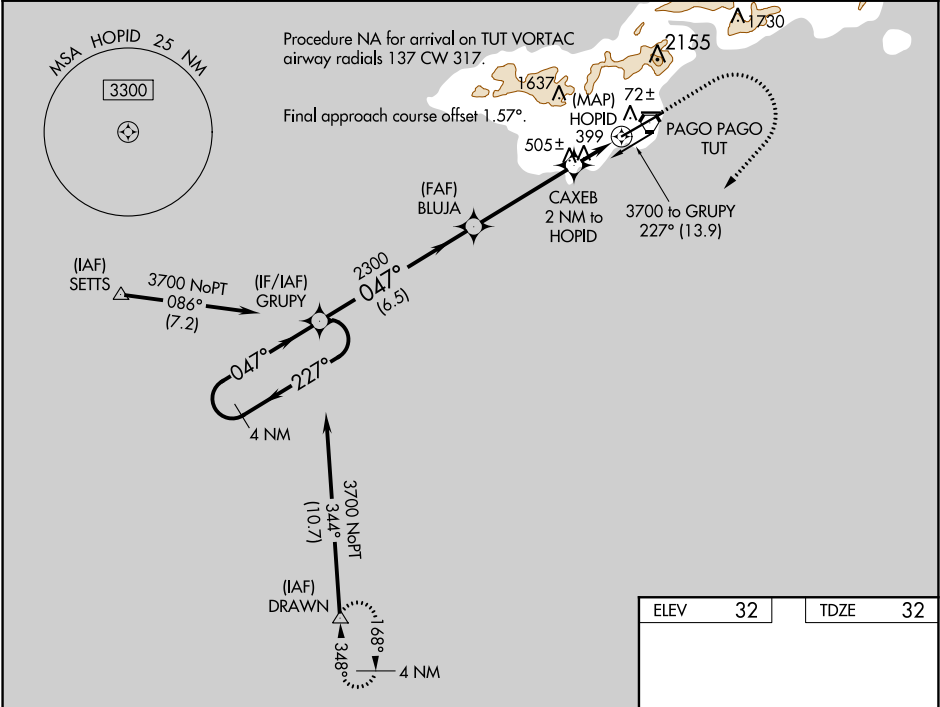
▲

For uncompensated Baro-VNAV systems, LNAV/VNAV NA below 22°C or above 54°C. When local altimeter setting not received, procedure NA. Circling NA northwest of Rwy 5-23. Rwy 5 helicopter visibility reduction below ¾ SM NA. Inop table does not apply to LNAV Cats A/B. For inop ALS, increase LNAV/VNAV all Cats visibility to 1¾ SM and LNAV Cats C/D visibility to 2 SM.

MALSR

MISSED APPROACH:
(Maintain 185 K max until 760) Climb to 760 then climbing right turn to 4000 direct DRAWN and hold.

AWOS-3PT 127.925	FALEOLO APP CON 118.1 6.553(HF)	CTAF 122.9	118.3 0
---------------------	------------------------------------	---------------	---------



4 NM Holding Pattern

VGSI and RNAV glidepath not coincident (VGSI Angle 3.25/TCH 57).

760 4000 DRAWN

GRUPY

3700 ← 227° 047° →

GP 3.25° TCH 51

2300

BLUJA 2300

CAXEB 2 NM to HOPID

HOPID

*840

6.5 NM 4.2 NM 2 NM 0.2

CATEGORY	A	B	C	D
LNAV/VNAV DA	551-1 519 (600-1)			
LNAV MDA	760-1	728 (800-1)	760-1½ 728 (800-1½)	
CIRCLING	760-1	728 (800-1)	820-2¼ 788 (800-2¼)	860-2¾ 828 (900-2¾)

ELEV 32 TDZE 32

3801 X 100

42

1001 X 150

101±

0.4% DOWN

047° to HOPID

PAC, 05 NOV 2020 to 31 DEC 2020

PAC, 05 NOV 2020 to 31 DEC 2020