

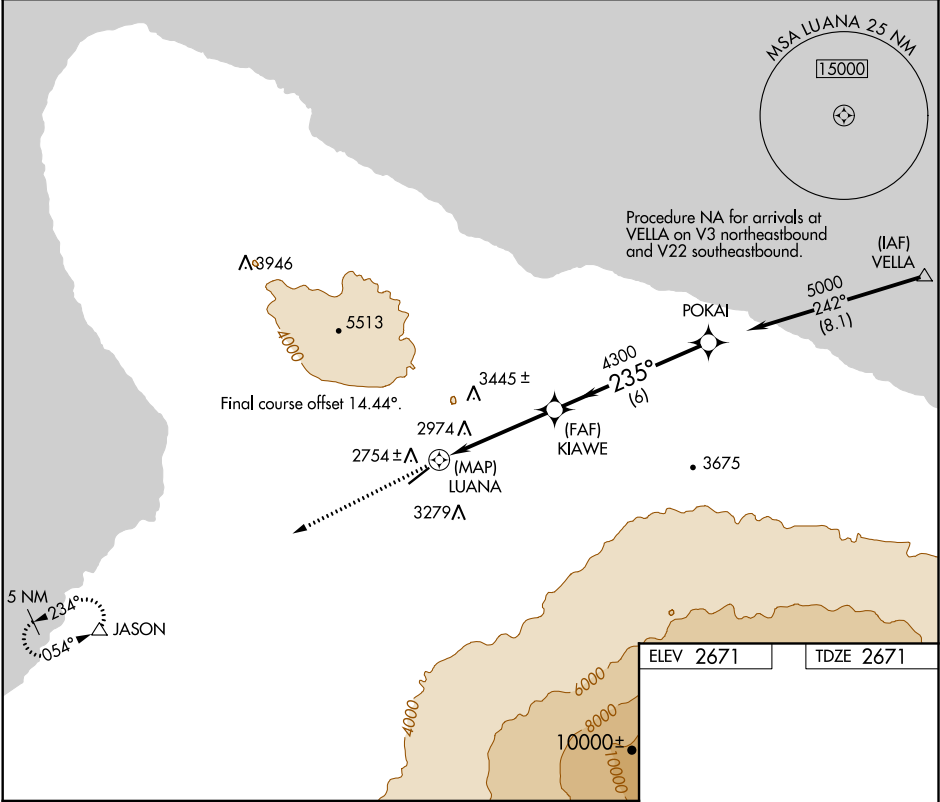
APP CRS	Rwy Idg	5197
235°	TDZE	2671
	Apt Elev	2671

RNAV (GPS) RWY 22  
WAIMEA-KOHALA (MUE)(PHMU)

RNP APCH	Circling NA NW of Rwy 4-22. Rwy 22 helicopter visibility reduction below 1 SM NA. When local altimeter setting not received procedure NA.
NA	

MISSED APPROACH: Climb to 5000 direct JASON and hold.

AWOS-3PT 120.0	HCF CENTER 118.45 278.3	CTAF 122.9 0
-------------------	----------------------------	-----------------



5000	JASON	VGSI and descent angles not coincident (VGSI Angle 3.00/TCH 35).			
↑	△				
CATEGORY	A	B	C	D	
LNAB MDA	3660-1¼ 989 (1000-1¼)	3660-1½ 989 (1000-1½)	3660-3 989 (1000-3)	989 (1000-3)	
CIRCLING	3660-1¼ 989 (1000-1¼)	3660-1½ 989 (1000-1½)	3660-3 989 (1000-3)	3880-3 1209 (1300-3)	

