
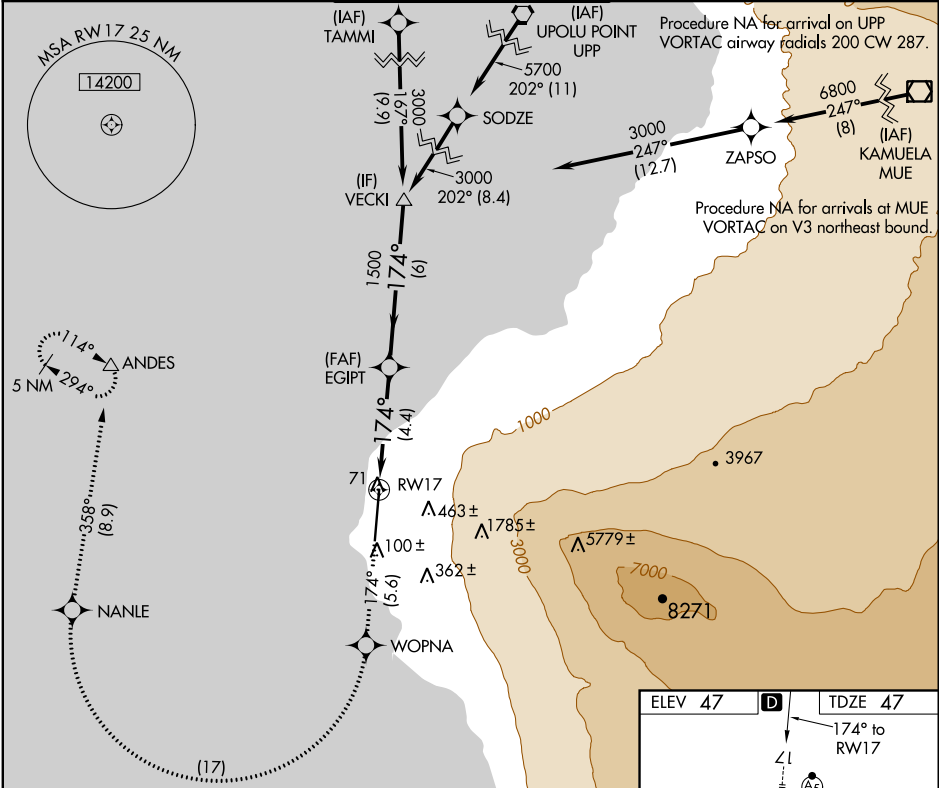


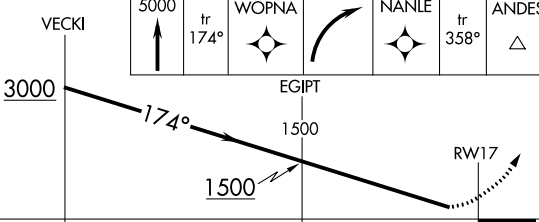
APP CRS	Rwy Idg 11000
174°	TDZE 47
	Apt Elev 47

RNAV (RNP) Z RWY 17
ELLISON ONIZUKA KONA INTL AT KEAHOLE (KOA) (PHKO)

▼ For uncompensated Baro-VNAV systems, procedure NA below 6°C (43°F) or above 48°C (119°F). RF required. GPS required. For inop ALS, increase RNP 0.30 all Cats visibility to 1½ mile.	MALSR 	MISSED APPROACH: Climb to 5000 on track 174° to WOPNA and right turn to NANLE, and on track 358° to ANDES and hold.
---	--	---

ATIS 127.4	HCF CENTER 118.45 278.3	KONA TOWER ★ 120.3 (CTAF) 254.3	GND CON 121.9	CLNC DEL 118.6
----------------------	-----------------------------------	---	-------------------------	--------------------------



VECKI	5000	tr 174°	WOPNA	NANLE	tr 358°	ANDES
						
GP 3.00° TCH 55						
CATEGORY	A	B	C	D		
RNP 0.17 DA	297-¾ 250 (300-¾)					
RNP 0.30 DA	484-1 437 (500-1)					
AUTHORIZATION REQUIRED						

