

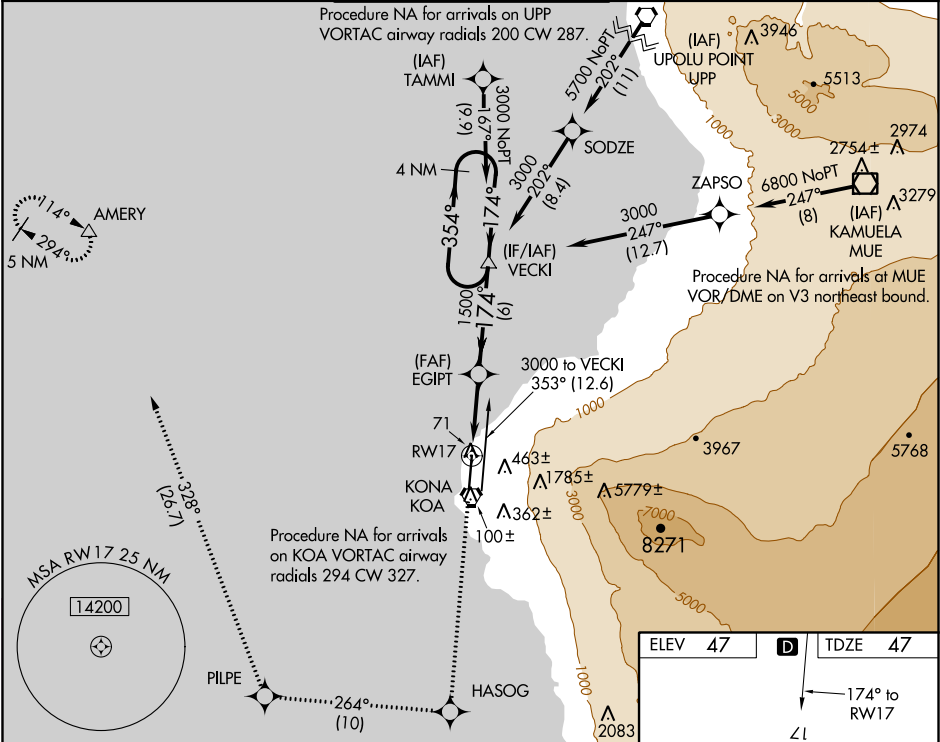
APP CRS	Rwy Idg 11000
174°	TDZE 47
	Apt Elev 47

RNAV (GPS) Y RWY 17

ELLISON ONIZUKA KONA INTL AT KEAHOLE (KOA) (PHKO)

<div><div>WAAS VNAV NA.</div><div>For uncompensated Baro-VNAV systems, LNAV/VNAV NA below -5°C (23°F) or above 43°C (109°F). Circling NA east of Rwy 17-35. DME/DME RNP-0.3 NA. For inop ALS, increase LNAV/VNAV all Cots visibility to 1½ miles.</div></div>	<div>MALSR</div> <div><div><div></div><div></div><div></div></div></div> <div>MISSED APPROACH: Climb to 5000 direct HASOG and on track 264° track to PILPE and on track 328° to AMERY and hold.</div>
---	---

ATIS 127.4	HCF CENTER 118.45 278.3	KONA TOWER★ 120.3(CTAF) 0 254.3	GND CON 121.9	CLNC DEL 118.6
----------------------	-----------------------------------	---	-------------------------	--------------------------



5000	HASOG	tr 264°	PILPE	tr 328°	AMERY
<div>↑</div>	<div>✧</div>		<div>✧</div>		<div>△</div>
*LNAV only					
RWY 17					
EGYPT 1500					
VECKI 3000					
GP 3.00° TCH 55					
1.7 NM 2.7 NM 6 NM					
CATEGORY	A	B	C	D	
LNAV/VNAV DA	540-1¼		493 (500-1¼)		
LNAV MDA	640-½ 593 (600-½)		640-1¼ 593 (600-1¼)		
CIRCLING	640-1 593 (600-1)		640-1¾ 593 (600-1¾)		

