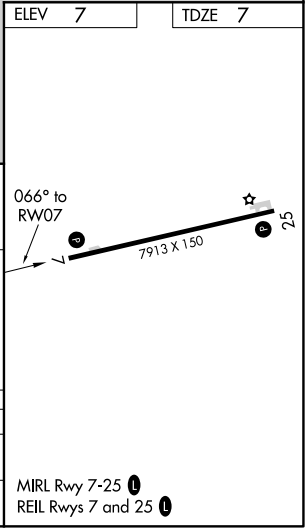
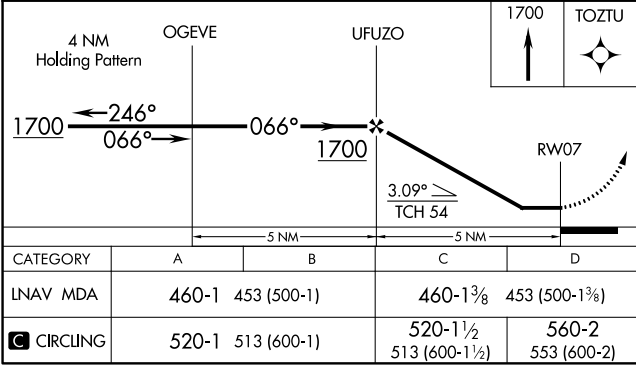
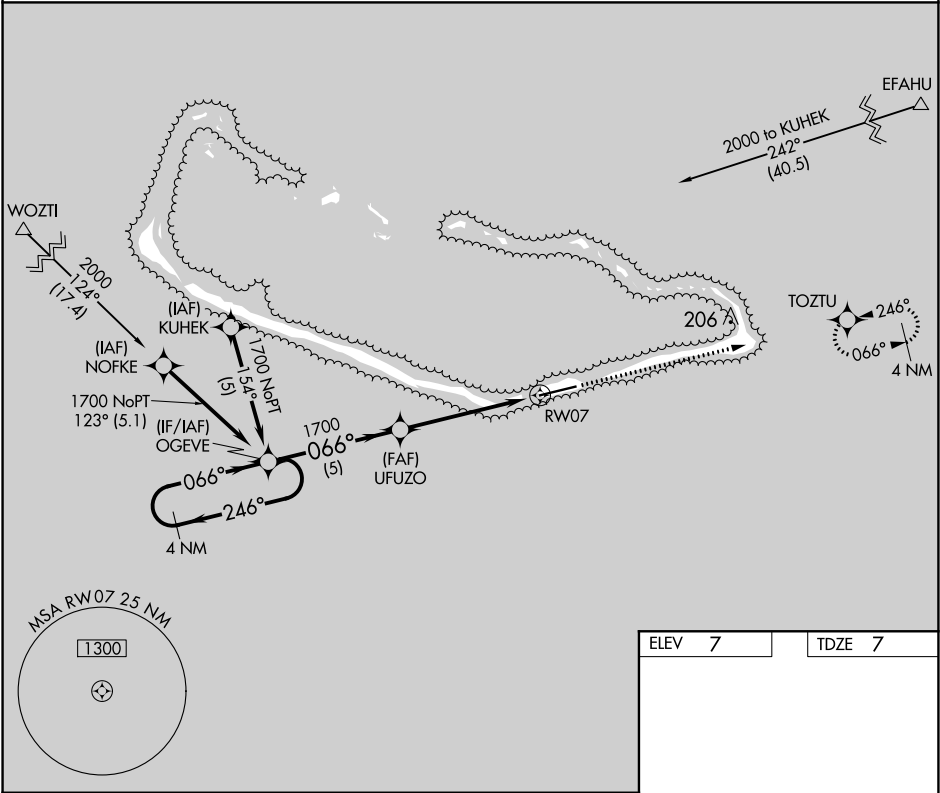


APP CRS	Rwy Idg	7913
066°	TDZE	7
	Apt Elev	7

RNAV (GPS) RWY 7  
AMATA KABUA INTL (MAJ)(PKMJ)

<p>Obtain local altimeter setting on CTAF; when not received, procedure NA. Rwy 7 helicopter visibility reduction below ¾ SM NA. DME/DME RNP-0.3 NA. No controlled airspace below 5500.</p>	<p>MISSED APPROACH: Climb to 1700 direct TOZTU and hold.</p>
---	--

MAJURO RADIO  
123.6 (CTAF) 0



PAC, 05 NOV 2020 to 31 DEC 2020

PAC, 05 NOV 2020 to 31 DEC 2020