

NDB SN <u>312</u>	APP CRS 246°	Rwy Idg TDZE Apt Elev	8700 210 215
-----------------------------	------------------------	-----------------------------	---

NDB RWY 25

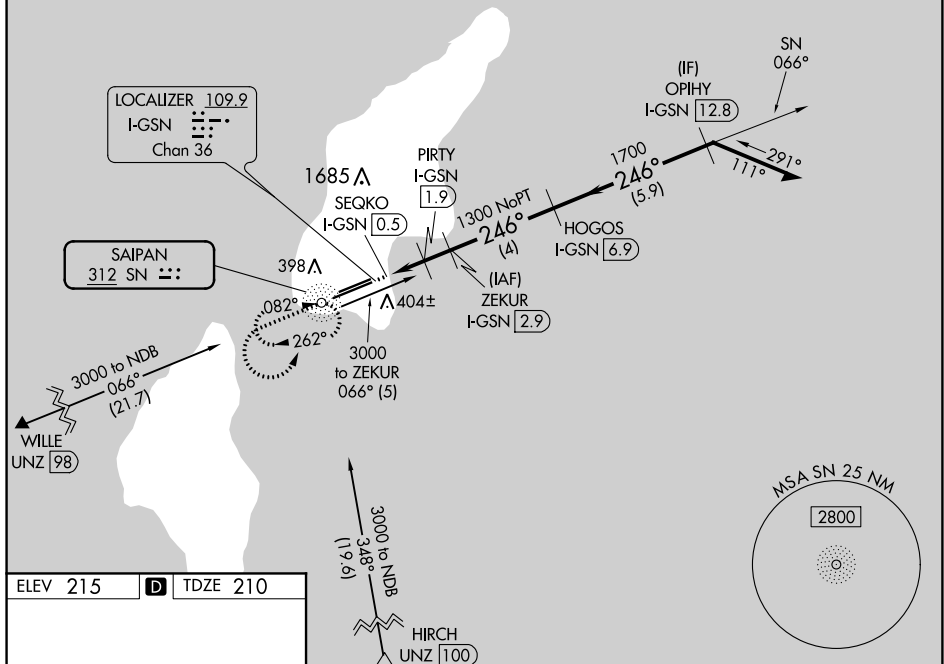
FRANCISCO C ADA/SAIPAN INTL (GSN)(PGSN)

T Circling NA north of Rwy 6-24.
Rwy 25 helicopter visibility reduction below $\frac{3}{4}$ SM NA.
DME required.

MISSED APPROACH: Climb to 2000 then climbing left turn to 2800 direct SN NDB and hold.

ATIS 127.2	GUAM APP CON 118.4 290.5	SAIPAN TOWER 125.7 256.9	GND CON 121.8
----------------------	------------------------------------	------------------------------------	-------------------------

DME REQUIRED



REIL Rwy 25
HIRL Rws 7-25 and 6-24

CATEGORY	A	B	C	D
S-25	720-1 510 (600-1)		720-1 $\frac{3}{8}$ 510 (600-1 $\frac{3}{8}$)	
C CIRCLING	720-1 505 (600-1)		720-1 $\frac{1}{2}$ 505 (600-1 $\frac{1}{2}$)	780-2 565 (600-2)