
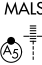
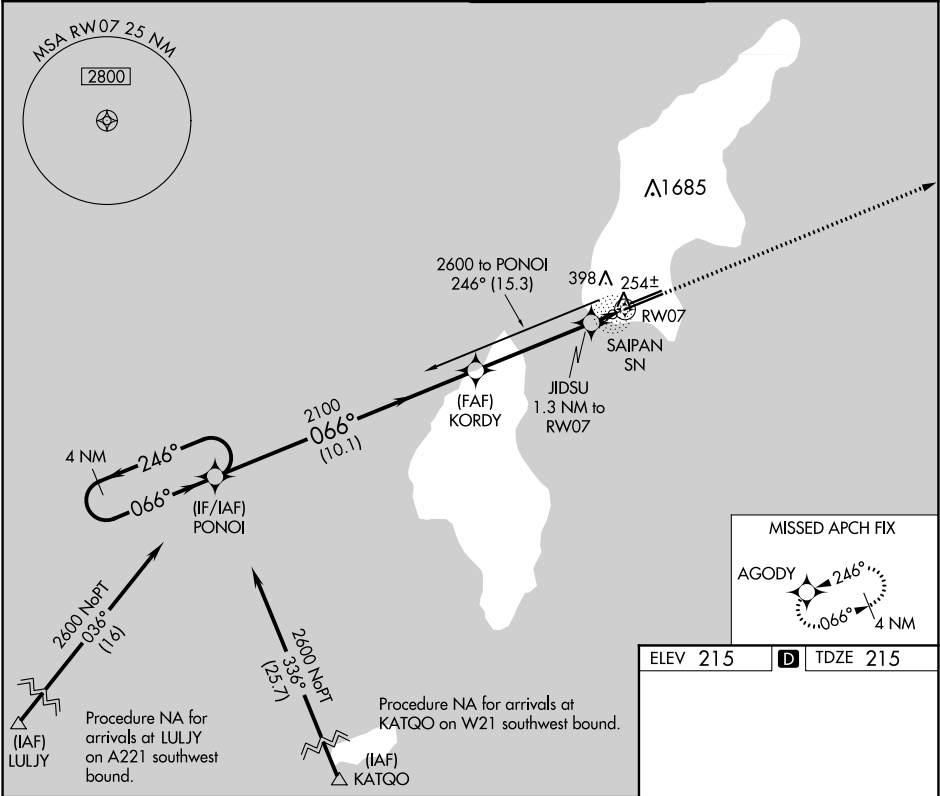



APP CRS	Rwy Idg	8700
066°	TDZE	215
	Apt Elev	215

RNAV (GPS) RWY 7
FRANCISCO C ADA/SAIPAN INTL (GSN)(PGSN)

 Circling NA north of Rwy 6-24. DME/DME RNP-0.3 NA.	 MALSR	MISSED APPROACH: Climb 2600 direct AGODY and hold.
---	---	--

ATIS 127.2	GUAM APP CON 118.4 290.5	SAIPAN TOWER 125.7 256.9	GND CON 121.8
---------------	-----------------------------	-----------------------------	------------------



4 NM Holding Pattern		PONO I	KORDY	JDSU 1.3 NM to RW07	2600	AGODY
2600 ← 246° 066° →		066°		3.00° TCH 55	2100	
		10.1 NM		4.5 NM	0.5	0.8 NM
CATEGORY	A	B	C	D		
LNNAV MDA	520-½		305 (400-½)			
 CIRCLING	720-1	505 (600-1)	720-1½ 505 (600-1½)	780-2 565 (600-2)		

