

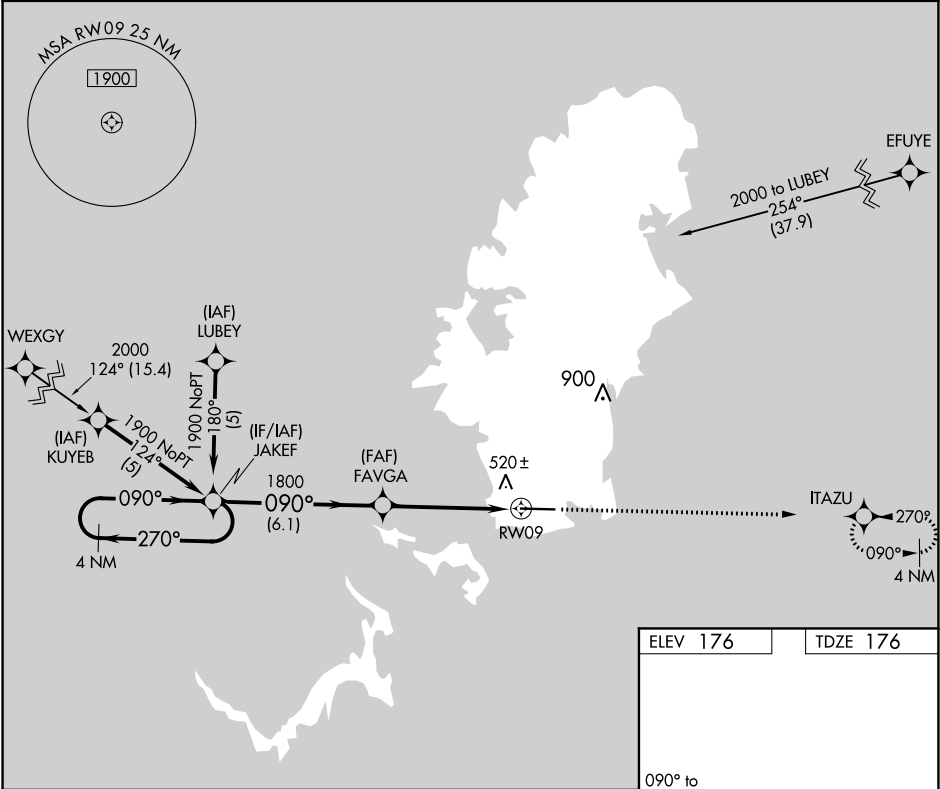
APP CRS	Rwy Idg	7200
090°	TDZE	176
	Apt Elev	176

RNAV (GPS) RWY 9
BABELTHUAP/KOROR (ROR)(PTRO)

Circling NA north of Rwy 9-27. Obtain local altimeter setting on CTAF; when not received, procedure NA.
DME/DME RNP-0.3 NA. No controlled airspace below 5500.

MISSED APPROACH: Climb to 1900 direct ITAZU WP and hold.

KOROR RADIO
123.6 (CTAF)



4 NM Holding Pattern

JAKEF

1900

ITAZU

CATEGORY	A	B	C	D
LNNAV MDA	720-1 544 (600-1)	720-1½ 544 (600-1½)	720-1¾ 544 (600-1¾)	720-2 544 (600-2)
CIRCLING	720-1 544 (600-1)	760-1½ 584 (600-1½)	780-2 604 (700-2)	

MIRL Rwy 9-27

REIL Rwy 9 and 27

PAC, 05 NOV 2020 to 31 DEC 2020

PAC, 05 NOV 2020 to 31 DEC 2020