

LOC I-AIW	APP CRS	Rwy Idg	9002
108.9	309°	TDZE	733
		Apt Elev	777

ILS or LOC RWY 31

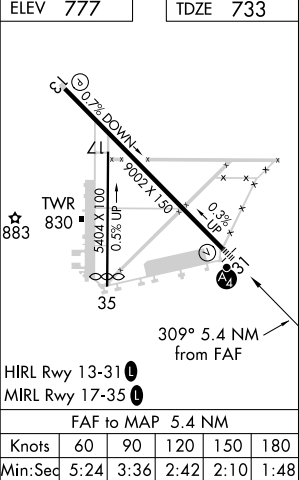
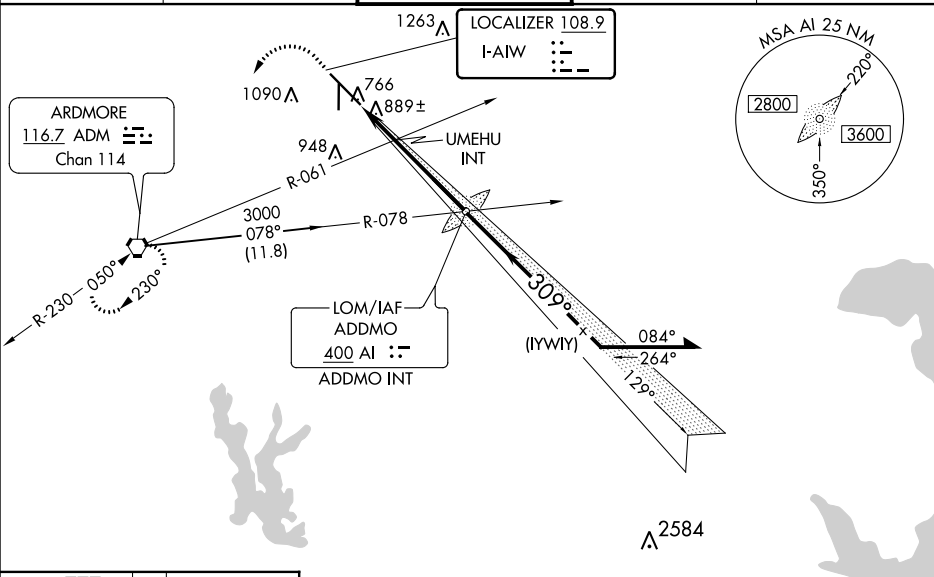
ARDMORE MUNI (ADM)

⚠ Autopilot coupled approach NA below 1360. When local altimeter setting not received, use Ardmore Downtown Executive altimeter setting: increase DA to 1026 feet; increase all MDAs 40 feet; increase Circling Cats C and D visibilities ¼ SM. Inop table does not apply to S-ILS 31 all Cats, S-LOC 31 Cats A and B; UMEHU FIX MINIMUMS S-LOC 31 Cats A and B. When using Ardmore Downtown Executive altimeter setting, inop table does not apply to S-ILS 31 all Cats, S-LOC 31 Cats A and B; UMEHU FIX MINIMUMS S-LOC 31 Cats A and B. For inop ALS, increase UMEHU FIX MINIMUMS S-LOC 31 Cats C and D visibility to 1½ SM. When using Ardmore Downtown Executive altimeter setting, for inop ALS, increase UMEHU FIX MINIMUMS Cats C and D visibility to 1¾ SM. Circling Rwy 13, 35 NA at night. Rwy 13, 35 helicopter visibility reduction below 1 SM NA. Rwy 31 helicopter visibility reduction below ¾ SM NA.

MALS

MISSED APPROACH:
Climb to 2000 then
descending left turn to
3000 direct ADM
VORTAC and hold.

ATIS	FORT WORTH CENTER	ARDMORE TOWER ★	GND CON	UNICOM
125.6	124.75 323.0	118.5 (CTAF) 257.7	121.8	122.95



ELEV 777	TDZE 733	2000	3000	ADM
		↑ 1320 when using Ardmore Downtown Executive altimeter setting. * LOC only.	↑ 1280 * †	2520
		1.8 NM	3.6 NM	
		6000	2520	3000
		129°	309°	129°
		Remain within 10 NM		
		GS 3.00° TCH 49		
		2600		
		1280 * †		
		309°		
		129°		
		2520		
		3000		
		129°		
		309°		
		129°		
		2520		
		3000		
		129°		
		309°		
		129°		
		2520		
		3000		
		129°		
		309°		
		129°		
		2520		
		3000		
		129°		
		309°		
		129°		
		2520		
		3000		
		129°		
		309°		
		129°		
		2520		
		3000		
		129°		
		309°		
		129°		
		2520		
		3000		
		129°		
		309°		
		129°		
		2520		
		3000		
		129°		
		309°		
		129°		
		2520		
		3000		
		129°		
		309°		
		129°		
		2520		
		3000		
		129°		
		309°		
		129°		
		2520		
		3000		
		129°		
		309°		
		129°		
		2520		
		3000		
		129°		
		309°		
		129°		
		2520		
		3000		
		129°		
		309°		
		129°		
		2520		
		3000		
		129°		
		309°		
		129°		
		2520		
		3000		
		129°		
		309°		
		129°		
		2520		
		3000		
		129°		
		309°		
		129°		
		2520		
		3000		
		129°		
		309°		
		129°		
		2520		
		3000		
		129°		
		309°		
		129°		
		2520		
		3000		
		129°		
		309°		
		129°		
		2520		
		3000		
		129°		
		309°		
		129°		
		2520		
		3000		
		129°		
		309°		
		129°		
		2520		
		3000		
		129°		
		309°		
		129°		
		2520		
		3000		
		129°		
		309°		
		129°		
		2520		
		3000		
		129°		
		309°		
		129°		
		2520		
		3000		
		129°		
		309°		
		129°		
		2520		
		3000		
		129°		
		309°		
		129°		
		2520		
		3000		
		129°		
		309°		
		129°		
		2520		
		3000		
		129°		
		309°		
		129°		
		2520		
		3000		
		129°		
		309°		
		129°		
		2520		
		3000		
		129°		
		309°		
		129°		
		2520		
		3000		
		129°		
		309°		
		129°		
		2520		
		3000		
		129°		
		309°		
		129°		
		2520		
		3000		
		129°		
		309°		
		129°		
		2520		
		3000		
		129°		
		309°		
		129°		
		2520		
		3000		
		129°		
		309°		
		129°		
		2520		
		3000		
		129°		
		309°		
		129°		
		2520		
		3000		
		129°		
		309°		
		129°		
		2520		
		3000		
		129°		
		309°		
		129°		
		2520		
		3000		
		129°		
		309°		
		129°		
		2520		
		3000		
		129°		
		309°		
		129°		
		2520		
		3000		
		129°		
		309°		
		129°		
		2520		
		3000		
		129°		
		309°		
		129°		
		2520		
		3000		
		129°		
		309°		
		129°		
		2520		
		3000		
		129°		
		309°		
		129°		
		2520		
		3000		
		129°		
		309°		
		129°		
		2520		
		3000		
		129°		
		309°		
		129°		
		2520		
		3000		
		129°		
		309°		
		129°		
		2520		
		3000		
		129°		
		309°		
		129°		
		2520		
		3000		
		129°		
		309°		
		129°		
		2520		
		3000		
		129°		
		309°		
		129°		
		2520		
		3000		
		129°		
		309°		
		129°		
		2520		
		3000		
		129°		
		309°		
		129°		
		2520		
		3000		
		129°		
		309°		
		129°		
		2520		
		3000		
		129°		
		309°		
		129°		
		2520		
		3000		
		129°		
		309°		
		129°		
		2520		
		3000		
		129°		
		309°		
		129°		
		2520		
		3000		
		129°		
		309°		
		129°		
		2520		
		3000		
		129°		
		309°		
		129°		
		2520		
		3000		
		129°		
		309°		
		129°		
		2520		
		3000		
		129°		
		309°		
		129°		
		2520		
		3000		
		129°		
		309°		
		129°		
		2520		
		3000		
		129°		
		309°		
		129°		
		2520		
		3000		
		129°		
		309°		
		129°		
		2520		
		3000		
		129°		
		309°		
		129°		
		2520		
		3000		
		129°		
		309°		
		129°		
		2520		
		3000		
		129°		
		309°		
		129°		
		2520		
		3000		
		129°		
		309°		
		129°		
		2520		
		3000		
		129°		
		309°		
		129°		
		2520		
		3000		
		129°		
		309°		
		129°		
		2520		
		3000		
		129°		
		309°		
		129°		
		2520		
		3000		
		129°		
		309°		
		129°		
		2520		
		3000		
		129°		
		309°		
		129°		
		2520		
		3000		
		129°		
		309°		
		129°		
		2520		
		3000		
		129°		
		309°		
		129°		
		2520		
		3000		
		129°		
		309°		
		129°		
		2520		
		3000		
		129°		
		309°		
		129°		
		2520		
		3000		
		129°		
		309°		
		129°		
		2520		
		3000		
		129°		
		309°		
		129°		
		2520		
		3000		
		129°		
		309°		
		129°		
		2520		
		3000		
		129°		
		309°		
		129°		
		2520		
		3000		
		129°		
		309°		
		129°		
		2520		
		3000		
		129°		
		309°		
		129°		
		2520		
		3000		
		129°		
		309°		
		129°		
		2520		
		3000		
		129°		
		309°		
		129°		
		2520		
		3000		
		129°		
		309°		
		129°		
		2520		
		3000		
		129°		
		309°		
		129°		
		2520		
		3000		
		129°		
		309°		
		129°		
		2520		
		3000		
		129°		
		309°		
		129°		
		2520		
		3000		
		129°		
		309°		
		129°		
		2520		
		3000		
		129°		
		309°		
		129°		
		2520		
		3000		
		129°		
		309°		
		129°		
		2520		
		3000		
		129°		
		309°		
		129°		
		2520		
		3000		
		129°		
		309°		
		129°		
		2520		
		3000		
		129°		
		309°		
		129°		
		2520		
		3000		
		129°		
		309°		
		129°		