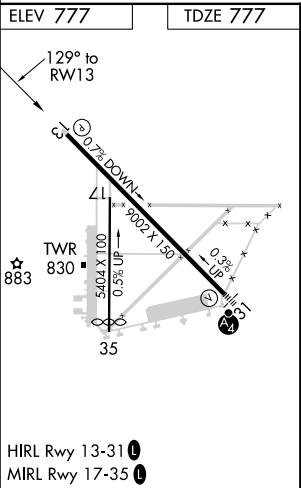
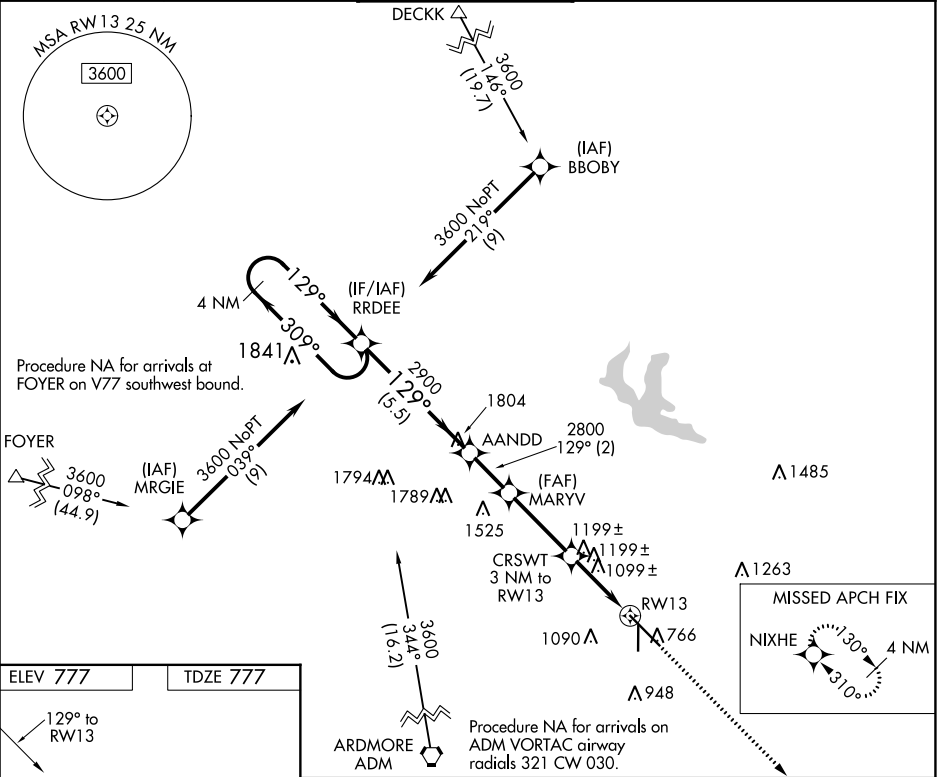


WAAS CH 53725 W13A	APP CRS 129°	Rwy Idg TDZE 777 Apt Elev 777
--	------------------------	---

RNAV (GPS) RWY 13
ARDMORE MUNI (ADM)

RNP APCH. ▼ Rwy 13 helicopter visibility reduction below 1 SM NA. When local altimeter setting not received, use Ardmore Downtown Executive altimeter setting and increase all MDA 40 feet. Procedure NA at night. ▲	MISSED APPROACH: Climb to 3600 direct NIXHE and hold.
--	---

ATIS 125.6	FORT WORTH CENTER 124.75 323.0	ARDMORE TOWER ★ 118.5 (CTAF) 0 257.7	GND CON 121.8	UNICOM 122.95
----------------------	--	--	-------------------------	-------------------------



SC-1, 03 DEC 2020 to 31 DEC 2020

SC-1, 03 DEC 2020 to 31 DEC 2020