

WAAS CH 69625 W31A	APP CRS 309°	Rwy ldg TDZE 733 Apt Elev 777
--	------------------------	---

RNAV (GPS) RWY 31

ARDMORE MUNI (ADM)

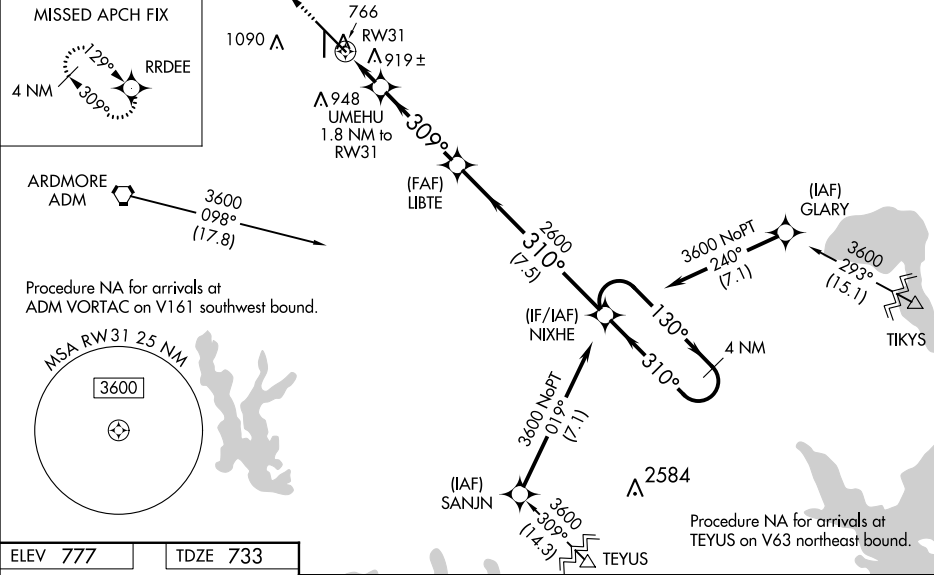
⚠ For uncompensated Baro-VNAV systems, LNAV/VNAV NA below -16°C (4°F) or above 39°C (102°F). DME/DME RNP-0.3 NA. When local altimeter setting not received, use

⚠ Ardmore Downtown Executive altimeter setting: increase LPV DA to 1026 feet; increase LNAV/VNAV DA to 1276 feet and all visibilities ¾ SM; increase all MDAs 40 feet and Circling Cats C and D visibility ¼ SM. Inop table does not apply to LPV, all Cats and LNAV Cats A and B. When using Ardmore Downtown Executive altimeter setting, inop table does not apply to LPV all Cats and LNAV Cats A and B. For inop ALS, increase LNAV Cats C and D visibility to 1¾ SM. For inop ALS, when using Ardmore Downtown Executive altimeter setting, increase LNAV Cats C and D to 1¾ SM. VDP NA when using Ardmore Downtown Executive altimeter setting. Rwy 31 helicopter visibility reduction below ¾ SM NA. Rwy 13, 35 helicopter visibility reduction below 1 SM NA. Circling Rwy 13, 35 NA at night.

MALS

MISSED APPROACH:
Climb to 3600 direct
RRDEE and hold.

ATIS 125.6	FORT WORTH CENTER 124.75 323.0	ARDMORE TOWER ★ 118.5 (CTAF) 0 257.7	GND CON 121.8	UNICOM 122.95
----------------------	--	--	-------------------------	-------------------------



ELEV 777	TDZE 733
-----------------	-----------------

HIRL Rwy 13-31
MIRL Rwy 17-35

*LNAV only.

UMEHU 1.8 NM to RW31

LIBTE 2600

NIXHE 4 NM Holding Pattern

3600

130°

310°

309°

310°

2600

GP 3.00° TCH 49

1.3 NM

0.5

3.9 NM

7.5 NM

CATEGORY	A	B	C	D
LPV DA		991-1	258 (300-1)	
LNAV/VNAV DA		1241-1¼	508 (500-1¼)	
LNAV MDA		1180-1	447 (500-1)	
CIRCLING	1380-1	603 (700-1)	1440-1¾ 663 (700-1¾)	1440-2 663 (700-2)