

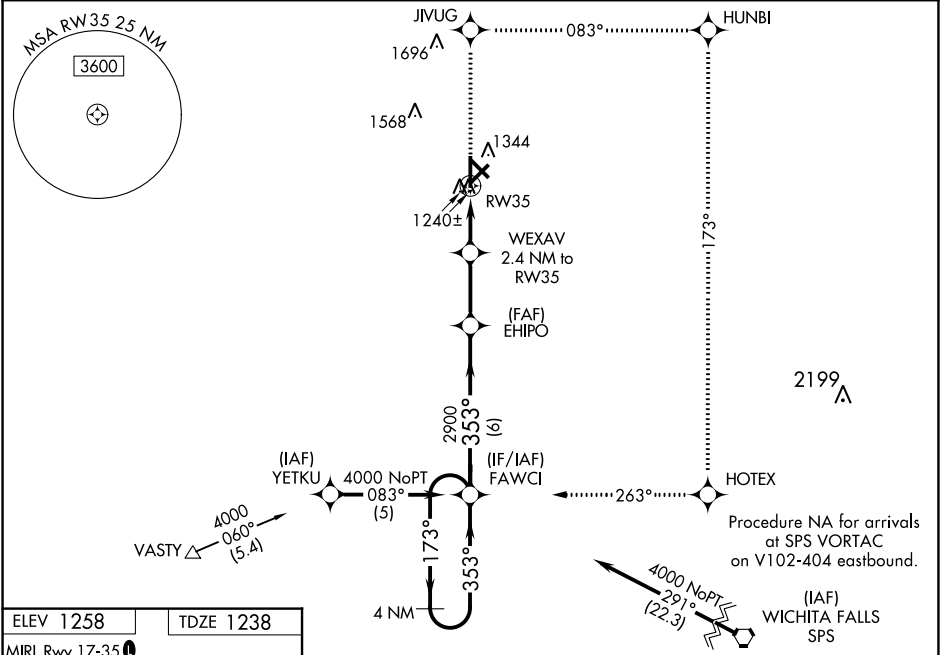
WAAS CH 56419 W35A	APP CRS 353°	Rwy Idg TDZE 1238 Apt Elev 1258
--	------------------------	---

RNAV (GPS) RWY 35
FREDERICK RGNL (FDR)

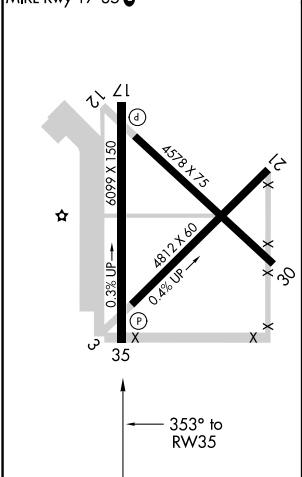
⚠ For uncompensated Baro-VNAV systems, LNAV/VNAV NA below -17°C (2°F) or above 46°C (114°F). DME/DME RNP-0.3 NA. Baro-VNAV and VDP NA when using Vernon altimeter setting. When local altimeter setting not received, use Vernon altimeter setting and increase all DA/MDA 40 feet, increase LNAV Cat C visibility ¼ mile. Night landing: Rwy 3, 12, 17, 21, 30, NA.

MISSED APPROACH: Climb to 4000 direct JIVUG and right turn on track 083° to HUNBI and right turn on track 173° to HOTEX and right turn on track 263° to FAWCI and hold.

ASOS 132.675	ALTUS APP CON ★ 125.1 353.7	UNICOM 123.05 (CTAF) 0
------------------------	---------------------------------------	----------------------------------



ELEV 1258	TDZE 1238
-----------	-----------



4000	JIVUG	HUNBI	HOTEX	FAWCI
↑	tr 083°	tr 173°	tr 263°	
*LNAV only.				
WEXAV 2.4 NM to RW35 EHIPO 2900 FAWCI 173° 4000 Holding Pattern				
1 NM to RW35 RW35 2040 VGSI and RNAV glidepath not coincident (VGSI Angle 3.09/TCH 46). GP 3.00° TCH 40				
1 NM 1.4 NM 2.6 NM 6 NM				
CATEGORY	A	B	C	D
LPV DA	1438-¾ 200 (200-¾)			
LNAV/VNAV DA	1500-1 262 (300-1)			
LNAV MDA	1600-1 362 (400-1)			1600-1¼ 362 (400-1¼)
CIRCLING	1700-1 442 (500-1)	1720-1 462 (500-1)	1780-1½ 522 (600-1½)	1880-2 622 (700-2)