

## VANCE AFB (KEND)

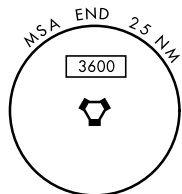
AL-135 [USAF]

SALSF

A<sub>2</sub>

**MISSED APPROACH:** Climb to 4000, intercept  
END VORTAC R-174 to ADOWS and hold.

RADAR or DME  
REQUIRED



**MISSED APPROACH**

Max holding  
alt 6000

Min holding  
alt 4000

ADWS  
END (15)

265K

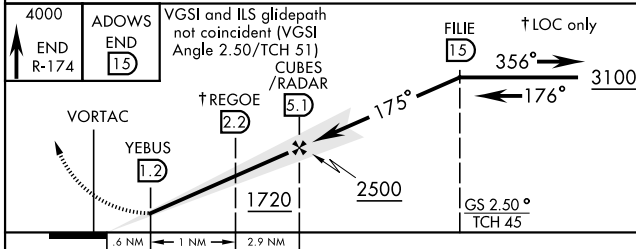
3520

174

END (19)

R-174

EMERG SAFE ALT 100 NM 4800



36°20'N-97°55'W

VANCE AFB (KEND)

## ILS or LOC RWY 17C