

ENID, OKLAHOMA

RNAV (GPS) RWY 17R

APCH CRS 163°	Rwy Idg TDZE Arpt Elev	9217 1287 1307
------------------	------------------------------	----------------------

AL-135 (USAF)

VANCE AFB (KEND)

T * When ALS inop, increase CAT CDE vis to 1 1/8 miles.
 ** Circling not authorized at night to RWY 35R.

SALS

MISSED APPROACH: Climb to 1900, then climbing right turn to 4300 direct TARKE and hold.

ATIS★
115.4 263.15

APP CON
125.45 388.2 EAST
126.75 346.325 WEST

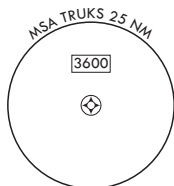
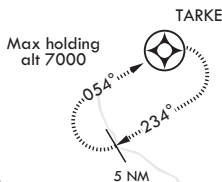
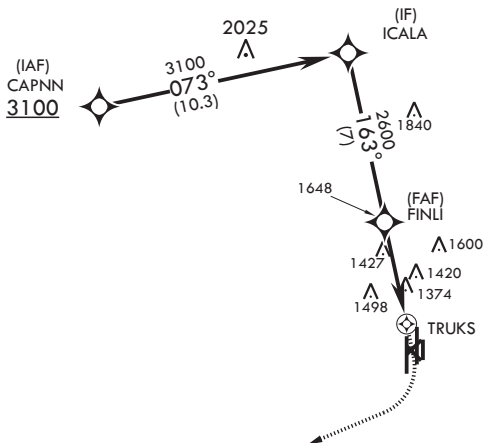
TOWER★
124.05 259.1

GND CON
121.8 289.4

CLNC DEL
225.4

DME/DME RNP-0.3 NA

FOR USE BY 71FTW
AIRCRAFT ONLY



RADAR REQUIRED

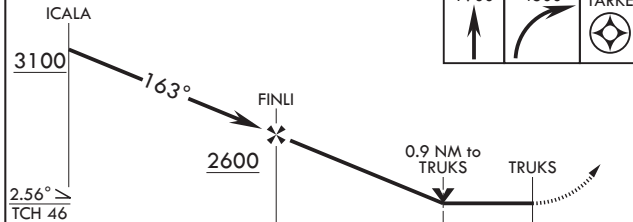
1726

EMERG SAFE ALT 100 NM 4800

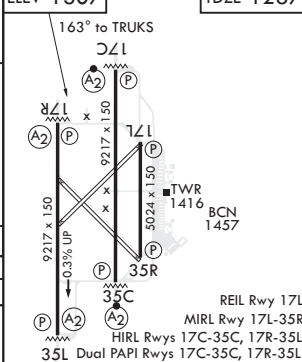


ELEV 1307

TDZE 1287



CATEGORY	A	B	C	D	E
LNAV MDA*	1680-1		393	(400-1)	
C CIRCLING**	1760-1 453 (500-1)		1820-1½ 513 (600-1½)	1920-2 613 (700-2)	2300-3 993 (1000-3)



ENID, OKLAHOMA

36°20'N - 97°55'W

VANCE AFB (KEND)

Amdt 5 15AUG19

RNAV (GPS) RWY 17R

SC-1, 03 DEC 2020 to 31 DEC 2020