

ENID, OKLAHOMA

# VOR/DME or TACAN RWY 17C

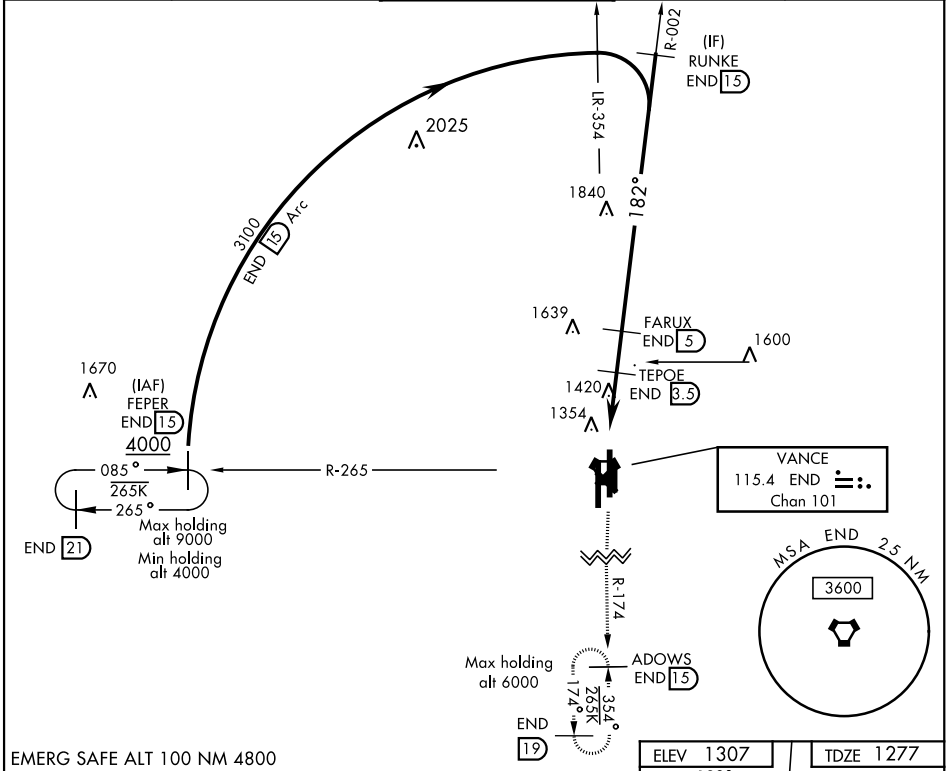
VORTAC END <b>115.4</b> Chan <b>101</b>	APCH CRS <b>182°</b>	Rwy Idg <b>9217</b> TDZE <b>1277</b> Arpt Elev <b>1307</b>
---	-------------------------	--

AL-135 [USAF]

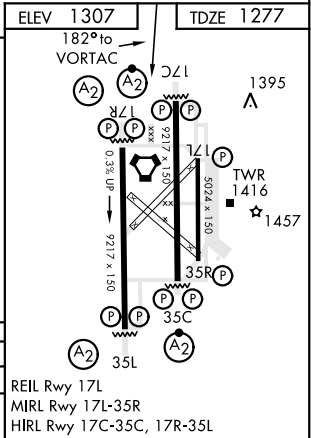
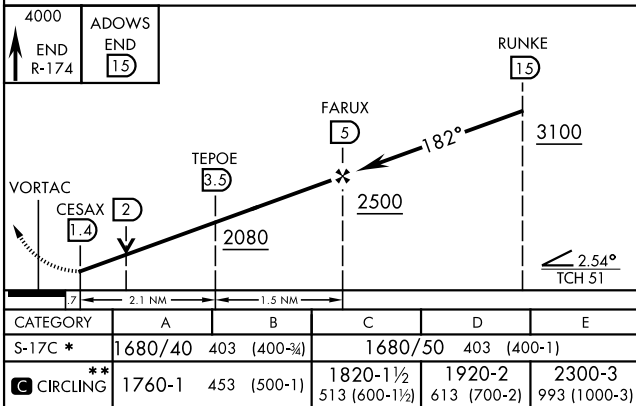
VANCE AFB (KEND)

<b>▼</b> * When ALS inop, increase CAT AB RVR to 55 and vis to 1 mile, CAT CDE RVR to 60 and vis to 1½ miles. ** Circling not authorized at night to Rwy 35R.	SALSF <b>(A2)</b>	MISSED APPROACH: Climb to 4000, intercept END VORTAC R-174 to ADOWS and hold.
---	----------------------	--

ATIS ★ <b>115.4 263.15</b>	VANCE APP CON <b>125.45 388.2 EAST</b> <b>126.75 346.325 WEST</b>	VANCE TOWER ★ <b>124.05 259.1</b>	GND CON <b>121.8 289.4</b>	CLNC DEL <b>225.4</b>
-------------------------------	---	--------------------------------------	-------------------------------	--------------------------



EMERG SAFE ALT 100 NM 4800



ENID, OKLAHOMA	36° 20' N-97° 55' W	VANCE AFB (KEND)
----------------	---------------------	------------------

Amtd 4 12SEP19

# VOR/DME or TACAN RWY 17C

SC-1, 03 DEC 2020 to 31 DEC 2020