


ENID, OKLAHOMA

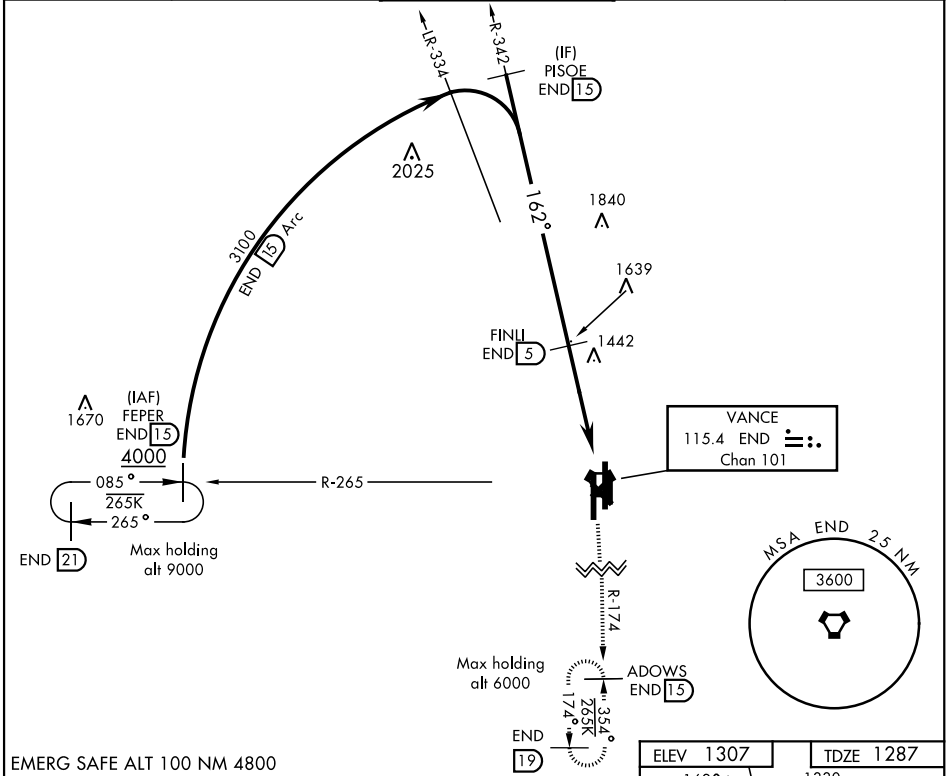
# VOR/DME or TACAN RWY 17R

VORTAC END <b>115.4</b> Chan <b>101</b>	APCH CRS <b>162°</b>	Rwy Idg <b>9217</b> TDZE <b>1287</b> Arpt Elev <b>1307</b>
---	-------------------------	--

AL-135 [USAF]

VANCE AFB (KEND)

▼ * When ALS inop, increase CAT CDE vis to 1 1/4 miles. ** Circling not authorized at night to Rwy 35R.		SALS (A2) 	MISSED APPROACH: Climb to 4000, intercept END VORTAC R-174 to ADOWS and hold.		
ATIS ★ 115.4 263.15	VANCE APP CON 125.45 388.2 EAST 126.75 346.325 WEST	VANCE TOWER ★ 124.05 259.1		GND CON 121.8 289.4	CLNC DEL 225.4



Profile view diagram showing altitudes and distances along the 162° radial. The diagram includes the following elements:

- PISOE 15**: A dashed vertical line representing the PISOE at 3100 feet.
- FINLI 5**: A dashed vertical line representing the FINLI at 2600 feet.
- CUTSU 1.8**: A dashed vertical line representing the CUTSU at 1800 feet.
- VORTAC**: A vertical line representing the VORTAC station.
- Altitudes**: 3100, 2600, 1800, and 1457 (TWR).
- Distances**: 4.0 NM between FINLI and VORTAC, and .7 NM between VORTAC and the end of the profile.
- Angles**: 162° radial from the VORTAC.
- Scale**: 2.56" = 1 NM, TCH 47.
- Ends**: 4000 END R-174 and 4000 END 15.

CATEGORY	A	B	C	D	E
S-17R *	1720-1 433 (500-1)				
<b>C</b> CIRCLING	1760-1 453 (500-1)	1820-1½ 513 (600-1½)	1920-2 613 (700-2)	2300-3 993 (1000-3)	

Plan view diagram showing the layout of the runway and taxiway. The diagram includes the following elements:

- Runway**: 17L, 17R, 35L, 35C, 35R.
- Taxiway**: 17L, 17R, 35L, 35C, 35R.
- Obstacles**: 1330, 1416 (TWR), 1457 (star), 1307 (ELEV), 1287 (TDZE).
- Distances**: 1.7R, 1.7L, 1.7C, 1.7S, 1.7T, 1.7U, 1.7V, 1.7W, 1.7X, 1.7Y, 1.7Z, 1.7AA, 1.7AB, 1.7AC, 1.7AD, 1.7AE, 1.7AF, 1.7AG, 1.7AH, 1.7AI, 1.7AJ, 1.7AK, 1.7AL, 1.7AM, 1.7AN, 1.7AO, 1.7AP, 1.7AQ, 1.7AR, 1.7AS, 1.7AT, 1.7AU, 1.7AV, 1.7AW, 1.7AX, 1.7AY, 1.7AZ, 1.7BA, 1.7BB, 1.7BC, 1.7BD, 1.7BE, 1.7BF, 1.7BG, 1.7BH, 1.7BI, 1.7BJ, 1.7BK, 1.7BL, 1.7BM, 1.7BN, 1.7BO, 1.7BP, 1.7BQ, 1.7BR, 1.7BS, 1.7BT, 1.7BU, 1.7BV, 1.7BW, 1.7BX, 1.7BY, 1.7BZ, 1.7CA, 1.7CB, 1.7CC, 1.7CD, 1.7CE, 1.7CF, 1.7CG, 1.7CH, 1.7CI, 1.7CJ, 1.7CK, 1.7CL, 1.7CM, 1.7CN, 1.7CO, 1.7CP, 1.7CQ, 1.7CR, 1.7CS, 1.7CT, 1.7CU, 1.7CV, 1.7CW, 1.7CX, 1.7CY, 1.7CZ, 1.7DA, 1.7DB, 1.7DC, 1.7DD, 1.7DE, 1.7DF, 1.7DG, 1.7DH, 1.7DI, 1.7DJ, 1.7DK, 1.7DL, 1.7DM, 1.7DN, 1.7DO, 1.7DP, 1.7DQ, 1.7DR, 1.7DS, 1.7DT, 1.7DU, 1.7DV, 1.7DW, 1.7DX, 1.7DY, 1.7DZ, 1.7EA, 1.7EB, 1.7EC, 1.7ED, 1.7EE, 1.7EF, 1.7EG, 1.7EH, 1.7EI, 1.7EJ, 1.7EK, 1.7EL, 1.7EM, 1.7EN, 1.7EO, 1.7EP, 1.7EQ, 1.7ER, 1.7ES, 1.7ET, 1.7EU, 1.7EV, 1.7EW, 1.7EX, 1.7EY, 1.7EZ, 1.7FA, 1.7FB, 1.7FC, 1.7FD, 1.7FE, 1.7FF, 1.7FG, 1.7FH, 1.7FI, 1.7FJ, 1.7FK, 1.7FL, 1.7FM, 1.7FN, 1.7FO, 1.7FP, 1.7FQ, 1.7FR, 1.7FS, 1.7FT, 1.7FU, 1.7FV, 1.7FW, 1.7FX, 1.7FY, 1.7FZ, 1.7GA, 1.7GB, 1.7GC, 1.7GD, 1.7GE, 1.7GF, 1.7GG, 1.7GH, 1.7GI, 1.7GJ, 1.7GK, 1.7GL, 1.7GM, 1.7GN, 1.7GO, 1.7GP, 1.7GQ, 1.7GR, 1.7GS, 1.7GT, 1.7GU, 1.7GV, 1.7GW, 1.7GX, 1.7GY, 1.7GZ, 1.7HA, 1.7HB, 1.7HC, 1.7HD, 1.7HE, 1.7HF, 1.7HG, 1.7HH, 1.7HI, 1.7HJ, 1.7HK, 1.7HL, 1.7HM, 1.7HN, 1.7HO, 1.7HP, 1.7HQ, 1.7HR, 1.7HS, 1.7HT, 1.7HU, 1.7HV, 1.7HW, 1.7HX, 1.7HY, 1.7HZ, 1.7IA, 1.7IB, 1.7IC, 1.7ID, 1.7IE, 1.7IF, 1.7IG, 1.7IH, 1.7II, 1.7IJ, 1.7IK, 1.7IL, 1.7IM, 1.7IN, 1.7IO, 1.7IP, 1.7IQ, 1.7IR, 1.7IS, 1.7IT, 1.7IU, 1.7IV, 1.7IW, 1.7IX, 1.7IY, 1.7IZ, 1.7JA, 1.7JB, 1.7JC, 1.7JD, 1.7JE, 1.7JF, 1.7JG, 1.7JH, 1.7JI, 1.7JJ, 1.7JK, 1.7JL, 1.7JM, 1.7JN, 1.7JO, 1.7JP, 1.7JQ, 1.7JR, 1.7JS, 1.7JT, 1.7JU, 1.7JV, 1.7JW, 1.7JX, 1.7JY, 1.7JZ, 1.7KA, 1.7KB, 1.7KC, 1.7KD, 1.7KE, 1.7KF, 1.7KG, 1.7KH, 1.7KI, 1.7KJ, 1.7KK, 1.7KL, 1.7KM, 1.7KN, 1.7KO, 1.7KP, 1.7KQ, 1.7KR, 1.7KS, 1.7KT, 1.7KU, 1.7KV, 1.7KW, 1.7KX, 1.7KY, 1.7KZ, 1.7LA, 1.7LB, 1.7LC, 1.7LD, 1.7LE, 1.7LF, 1.7LG, 1.7LH, 1.7LI, 1.7LJ, 1.7LK, 1.7LL, 1.7LM, 1.7LN, 1.7LO, 1.7LP, 1.7LQ, 1.7LR, 1.7LS, 1.7LT, 1.7LU, 1.7LV, 1.7LW, 1.7LX, 1.7LY, 1.7LZ, 1.7MA, 1.7MB, 1.7MC, 1.7MD, 1.7ME, 1.7MF, 1.7MG, 1.7MH, 1.7MI, 1.7MJ, 1.7MK, 1.7ML, 1.7MN, 1.7MO, 1.7MP, 1.7MQ, 1.7MR, 1.7MS, 1.7MT, 1.7MU, 1.7MV, 1.7MW, 1.7MX, 1.7MY, 1.7MZ, 1.7NA, 1.7NB, 1.7NC, 1.7ND, 1.7NE, 1.7NF, 1.7NG, 1.7NH, 1.7NI, 1.7NJ, 1.7NK, 1.7NL, 1.7NM, 1.7NO, 1.7NP, 1.7NQ, 1.7NR, 1.7NS, 1.7NT, 1.7NU, 1.7NV, 1.7NW, 1.7NX, 1.7NY, 1.7NZ, 1.7OA, 1.7OB, 1.7OC, 1.7OD, 1.7OE, 1.7OF, 1.7OG, 1.7OH, 1.7OI, 1.7OJ, 1.7OK, 1.7OL, 1.7OM, 1.7ON, 1.7OO, 1.7OP, 1.7OQ, 1.7OR, 1.7OS, 1.7OT, 1.7OU, 1.7OV, 1.7OW, 1.7OX, 1.7OY, 1.7OZ, 1.7PA, 1.7PB, 1.7PC, 1.7PD, 1.7PE, 1.7PF, 1.7PG, 1.7PH, 1.7PI, 1.7PJ, 1.7PK, 1.7PL, 1.7PM, 1.7PN, 1.7PO, 1.7PP, 1.7PQ, 1.7PR, 1.7PS, 1.7PT, 1.7PU, 1.7PV, 1.7PW, 1.7PX, 1.7PY, 1.7PZ, 1.7QA, 1.7QB, 1.7QC, 1.7QD, 1.7QE, 1.7QF, 1.7QG, 1.7QH, 1.7QI, 1.7QJ, 1.7QK, 1.7QL, 1.7QM, 1.7QN, 1.7QO, 1.7QP, 1.7QQ, 1.7QR, 1.7QS, 1.7QT, 1.7QU, 1.7QV, 1.7QW, 1.7QX, 1.7QY, 1.7QZ, 1.7RA, 1.7RB, 1.7RC, 1.7RD, 1.7RE, 1.7RF, 1.7RG, 1.7RH, 1.7RI, 1.7RJ, 1.7RK, 1.7RL, 1.7RM, 1.7RN, 1.7RO, 1.7RP, 1.7RQ, 1.7RR, 1.7RS, 1.7RT, 1.7RU, 1.7RV, 1.7RW, 1.7RX, 1.7RY, 1.7RZ, 1.7SA, 1.7SB, 1.7SC, 1.7SD, 1.7SE, 1.7SF, 1.7SG, 1.7SH, 1.7SI, 1.7SJ, 1.7SK, 1.7SL, 1.7SM, 1.7SN, 1.7SO, 1.7SP, 1.7SQ, 1.7SR, 1.7SS, 1.7ST, 1.7SU, 1.7SV, 1.7SW, 1.7SX, 1.7SY, 1.7SZ, 1.7TA, 1.7TB, 1.7TC, 1.7TD, 1.7TE, 1.7TF, 1.7TG, 1.7TH, 1.7TI, 1.7TJ, 1.7TK, 1.7TL, 1.7TM, 1.7TN, 1.7TO, 1.7TP, 1.7TQ, 1.7TR, 1.7TS, 1.7TT, 1.7TU, 1.7TV, 1.7TW, 1.7TX, 1.7TY, 1.7TZ, 1.7UA, 1.7UB, 1.7UC, 1.7UD, 1.7UE, 1.7UF, 1.7UG, 1.7UH, 1.7UI, 1.7UJ, 1.7UK, 1.7UL, 1.7UM, 1.7UN, 1.7UO, 1.7UP, 1.7UQ, 1.7UR, 1.7US, 1.7UT, 1.7UU, 1.7UV, 1.7UW, 1.7UX, 1.7UY, 1.7UZ, 1.7VA, 1.7VB, 1.7VC, 1.7VD, 1.7VE, 1.7VF, 1.7VG, 1.7VH, 1.7VI, 1.7VJ, 1.7VK, 1.7VL, 1.7VM, 1.7VN, 1.7VO, 1.7VP, 1.7VQ, 1.7VR, 1.7VS, 1.7VT, 1.7VU, 1.7VV, 1.7VW, 1.7VX, 1.7VY, 1.7VZ, 1.7WA, 1.7WB, 1.7WC, 1.7WD, 1.7WE, 1.7WF, 1.7WG, 1.7WH, 1.7WI, 1.7WJ, 1.7WK, 1.7WL, 1.7WM, 1.7WN, 1.7WO, 1.7WP, 1.7WQ, 1.7WR, 1.7WS, 1.7WT, 1.7WU, 1.7WV, 1.7WW, 1.7WX, 1.7WY, 1.7WZ, 1.7XA, 1.7XB, 1.7XC, 1.7XD, 1.7XE, 1.7XF, 1.7XG, 1.7XH, 1.7XI, 1.7XJ, 1.7XK, 1.7XL, 1.7XM, 1.7XN, 1.7XO, 1.7XP, 1.7XQ, 1.7XR, 1.7XS, 1.7XT, 1.7XU, 1.7XV, 1.7XW, 1.7XX, 1.7XY, 1.7XZ, 1.7YA, 1.7YB, 1.7YC, 1.7YD, 1.7YE, 1.7YF, 1.7YG, 1.7YH, 1.7YI, 1.7YJ, 1.7YK, 1.7YL, 1.7YM, 1.7YN, 1.7YO, 1.7YP, 1.7YQ, 1.7YR, 1.7YS, 1.7YT, 1.7YU, 1.7YV, 1.7YW, 1.7YX, 1.7YY, 1.7YZ, 1.7ZA, 1.7ZB, 1.7ZC, 1.7ZD, 1.7ZE, 1.7ZF, 1.7ZG, 1.7ZH, 1.7ZI, 1.7ZJ, 1.7ZK, 1.7ZL, 1.7ZM, 1.7ZN, 1.7ZO, 1.7ZP, 1.7ZQ, 1.7ZR, 1.7ZS, 1.7ZT, 1.7ZU, 1.7ZV, 1.7ZW, 1.7ZX, 1.7ZY, 1.7ZZ.

ENID, OKLAHOMA

36°20'N-97°55'W

VANCE AFB (KEND)

Amdt 4 12SEP19  
TERPS

# VOR/DME or TACAN RWY 17R

SC-1, 03 DEC 2020 to 31 DEC 2020

SC-1, 03 DEC 2020 to 31 DEC 2020