

LOC I-EIU <u>108.3</u>	APP CRS 355°	Rwy Idg 8614 TDZE 1147 Apt Elev 1167
----------------------------------	------------------------	---

ILS or LOC RWY 35

ENID WOODRING RGNL (WDG)

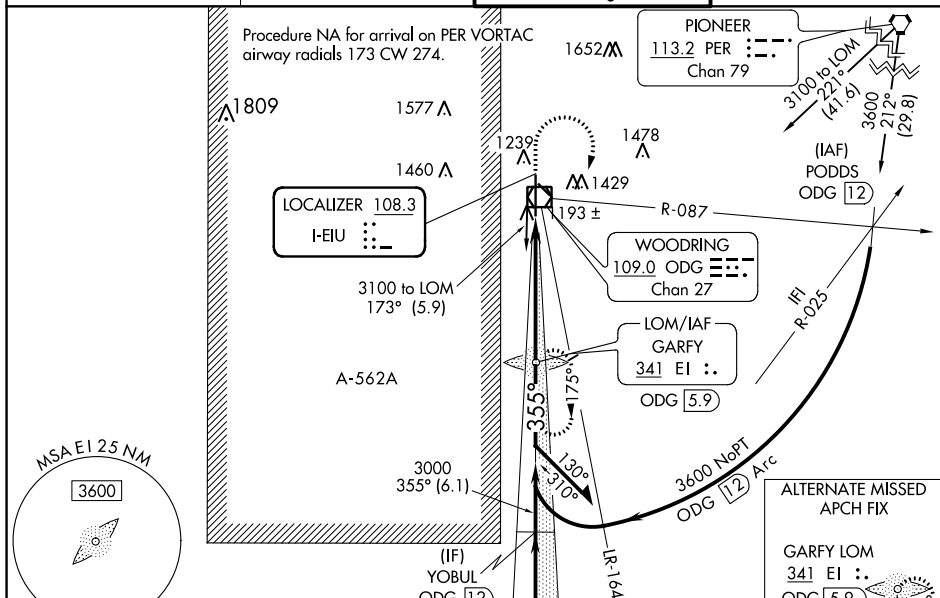
ADF required.

- A** Simultaneous reception of I-EIU and ODG VOR/DME required. For inop ALS, increase S-ILS 35 Cat E visibility to $3\frac{1}{4}$ SM, increase S-LOC 35 Cat E visibility to $1\frac{1}{4}$ SM. Procedure turn NA for Cat E.



MISSED APPROACH: Climb to 2500 then climbing right turn to 3000 direct GARFY LOM and hold.

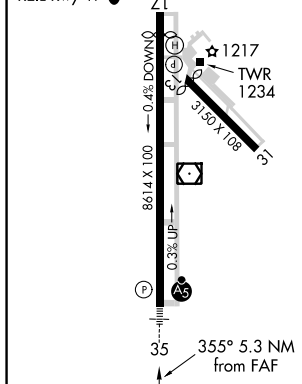
AWOS-3 120.625	VANCE APP CON ★ 121.3 346.325	WOODRING TOWER ★ 118.9 (CTAF) 0 257.95	GND CON 121.925
--------------------------	---	--	---------------------------



SC-1, 03 DEC 2020 to 31 DEC 2020

ELEV 1167	TDZE 1147
-----------	-----------

MIRL Rwy 13-31 and 17-35 **L**
REIL Rwy 17 **L**






FAF to MAP 5.3 NM

Knots	60	90	120	150	180
Min:Sec	5:18	3:32	2:39	2:07	1:46

KINGFISHER
114.7 IFI ::--
Chan 94

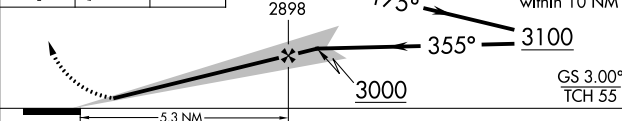
Procedure NA for arrival on IRW VORTAC
airway radials 292 CW 023.


WILL ROGERS
114.1 IRW ::-
Chan 88

2500	3000	EI
		

GARFY
EI LOM
VGS1 and ILS glidepath not coincident
(VGS1 Angle 3.00/TCH 49).

Remain
within 10 NM



CATEGORY	A	B	C	D	E
S-ILS 35	1347- $\frac{1}{2}$ 200 (200- $\frac{1}{2}$)				
S-LOC 35	1580- $\frac{1}{2}$ 433 (500- $\frac{1}{2}$)		1580- $\frac{3}{4}$ 433 (500- $\frac{3}{4}$)		
 CIRCLING	1760-1 593 (600-1)		1820- $\frac{1}{4}$ 653 (700- $\frac{1}{4}$)	1880- $\frac{2}{4}$ 713 (800- $\frac{2}{4}$)	2000-3 833 (900-3)

ENID, OKLAHOMA
Amdt 7A 26MAR20

36°23'N-97°47'W

ENID WOODRING RGNL (WDG)
ILS or LOC RWY 35