

LOC/DME I-AAY	APP CRS	Rwy Idg	8273
110.3	227°	TDZE	262
Chan 40		Apt Elev	266

ILS or LOC RWY 22R  
BILL AND HILLARY CLINTON NATIONAL/ADAMS FIELD (LIT)

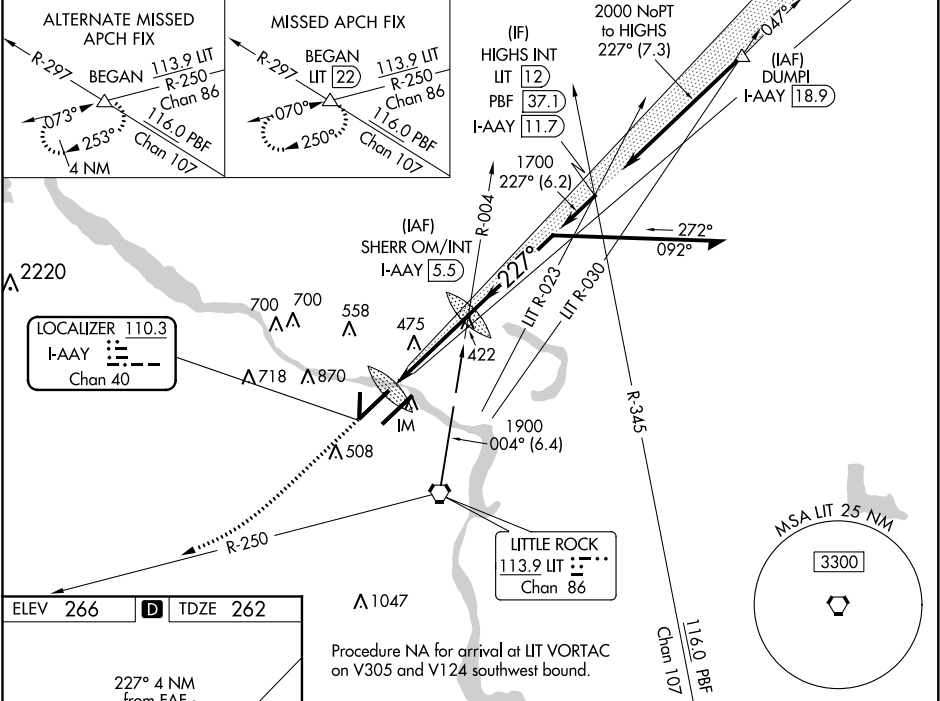
DME required.

Simultaneous approach authorized with Rwy 22L. VDP NA when using Stuttgart altimeter setting. When local altimeter setting not received, use Stuttgart altimeter setting: increase all DA to 544 feet and increase S-ILS all Cats visibility to RVR 2200; increase all MDAs 100 feet and increase S-LOC Cat C/D visibility to RVR 5500, and Circling Cat B visibility to 1½ SM, Cat C visibility to 3 SM. For inop ALS, increase S-LOC Cat C/D visibility to RVR 6000. For inop ALS when using Stuttgart altimeter setting, increase S-ILS all Cats visibility to RVR 4500 and S-LOC Cat C/D visibility to 1½ SM.

ALS-2

MISSED APPROACH: Climb to 1000 then climbing right turn to 2300 on LIT VORTAC R-250 to BEGAN INT/ LIT 22 DME and hold.

D-ATIS	LITTLE ROCK APP CON	ADAMS TOWER	GND CON	CLNC DEL
125.65	135.4 353.6	118.7 257.8	121.9 339.8	118.95



1000	2300	BEGAN	SHERR OM/INT	Remain within 10 NM
↑	LIT	△	I-AAY [5.5]	
*LOC only.				
IM	*I-AAY [2.5]	1601	047°	1900
I-AAY [1.5]		1700	227°	GS 3.00° TCH 59
0.1	1 NM	2.9 NM		
CATEGORY	A	B	C	D
S-ILS 22R	462/18 200 (200-½)			
S-LOC 22R	680/24 418 (500-½)	680/40 418 (500-¾)		
CIRCLING	800-1 534 (600-1)	1000-1 734 (800-1)	1180-2¾ 914 (1000-2¾)	1180-3 914 (1000-3)

SC-1, 03 DEC 2020 to 31 DEC 2020

SC-1, 03 DEC 2020 to 31 DEC 2020