

LOC I-TIK	APCH CRS	Rwy ldg
109.5	357°	11,100
		TDZE
		1291
		Arprt Elev
		1291

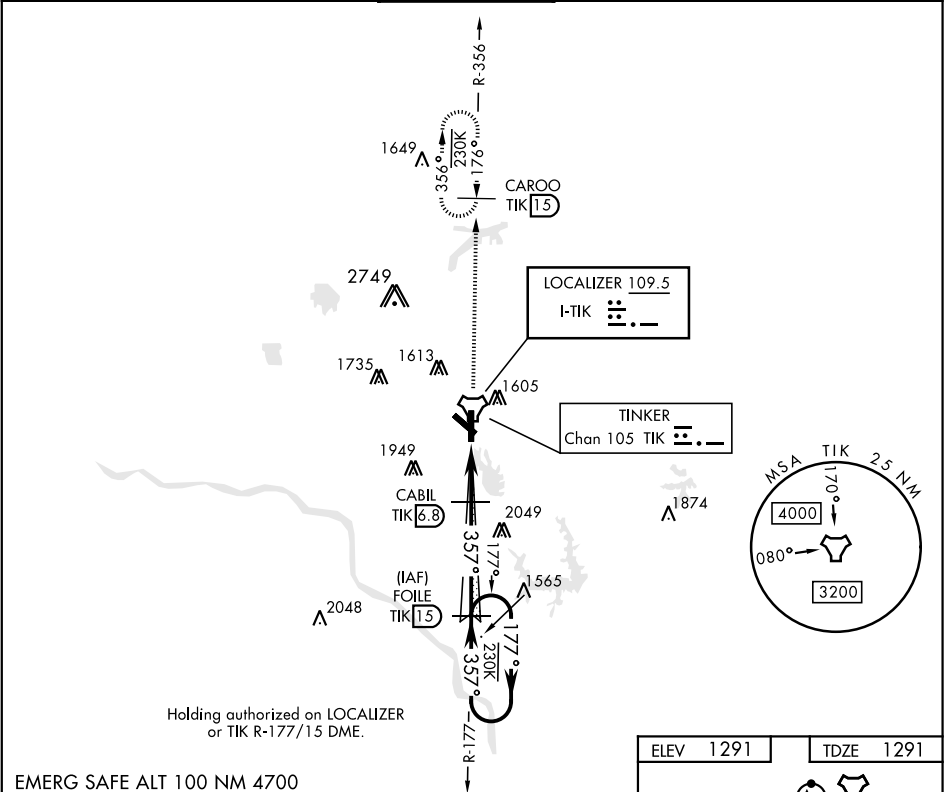
AL-299 [USAF]

ILS or LOC/DME Z RWY 36

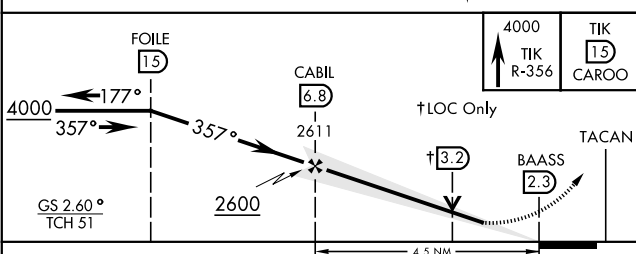
TINKER AFB (KTIK)

* When ALS inop, increase CAT ABC RVR to 50 and vis to 1 mile, CAT DE RVR to 60 and vis to 1 1/4 mile. ** CAT E Circling NA to Rwy 18 and in sector S of Rwy 13-31 and W of Rwy 18-36.		ALSF-1 	MISSED APPROACH: Climb to 4000 on TIK TACAN R-356 to CAROO and hold.
---	--	------------	--

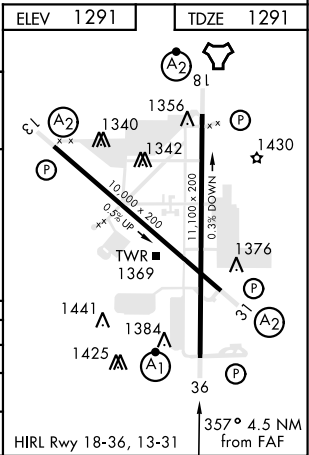
ATIS ★ 270.1	OKE CITY APP CON 120.45 288.325	TINKER TOWER 124.45 251.05	GND CON 121.8 275.8	CLNC DEL 119.7 335.8	ASR
-----------------	------------------------------------	-------------------------------	------------------------	-------------------------	-----



EMERG SAFE ALT 100 NM 4700



CATEGORY	A	B	C	D	E
S-ILS 36	1491/24		200	(200-½)	
S-LOC 36 *	1680/24 389 (400-½)		1680/35 389 (400-¾)		
CIRCLING **	1820-1 529 (600-1)	1840-1 549 (600-1)	1960-1¾ 669 (700-1¾)	1960-2 669 (700-2)	1960-2¼ 669 (700-2¼)



ILS or LOC/DME Z RWY 36