
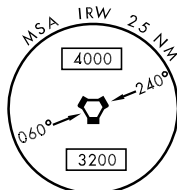
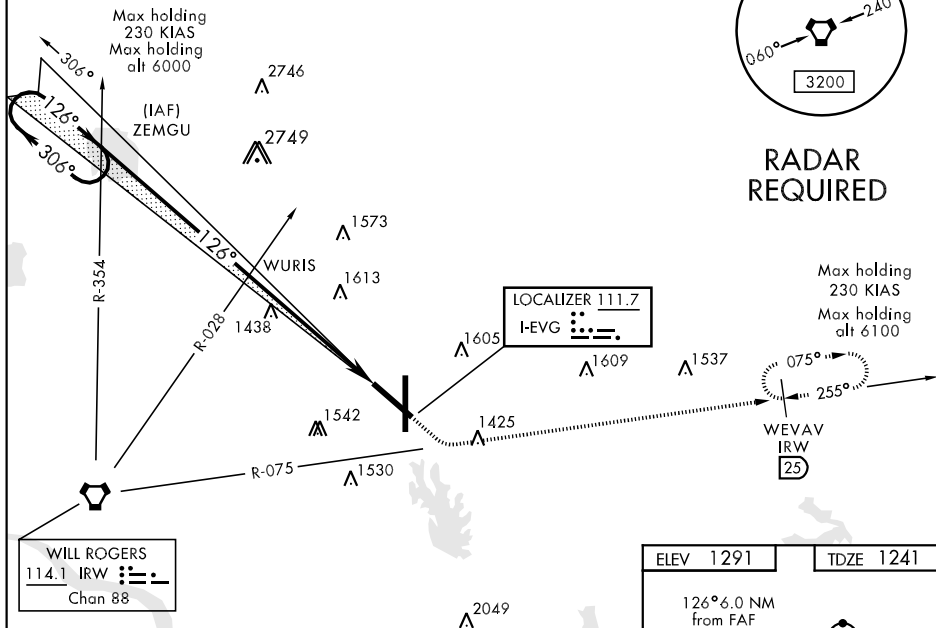


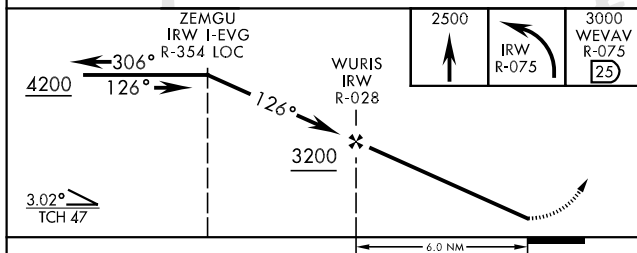
LOC I-EVG 111.7	APCH CRS 126°	Rwy Idg 10,000 TDZE 1241 Arpt Elev 1291	AL-299 [USAF]	TINKER AFB (KTIK)
<p>▼ * When ALS inop, increase CAT AB RVR to 50 and vis to 1 mile, CAT C RVR to 60 and vis to 1¼ miles, CAT D vis to 1½ miles, CAT E vis to 1¾ miles.</p>			<p>SALS</p> <p>(A2) </p>	<p>MISSED APPROACH: Climb straight ahead to 2500, then left turn to intercept IRW R-075 to 25 DME (WEVAV) and hold at 3000.</p>
ATIS ★ 270.1	OKE CITY APP CON 124.2 336.4	TINKER TOWER 124.45 251.05	GND CON 121.8 275.8	CLNC DEL 119.7 335.8
			ASR	

**** CAT E Circling not authorized in sector S of Rwy 13-31 and W of Rwy 18-36.**

CAUTION: VFR Flyway
from FAF to MAP, SFC to
3000 MSL.

RADAR
REQUIRED

EMERG SAFE ALT 100 NM 4700



CATEGORY	A	B	C	D	E
S-13 *	1740/40 499 (500-34)		1740/50 499 (500-1)	1740/60 499 (500-14)	1740-1½ 499 (500-1½)
CIRCLING**	1880-1 589 (600-1)		1880-1½ 589 (600-1½)	1980-2¼ 689 (700-2¼)	2040-2¾ 749 (800-2¾)

