

OKLAHOMA CITY, OKLAHOMA

RNAV (GPS) RWY 18

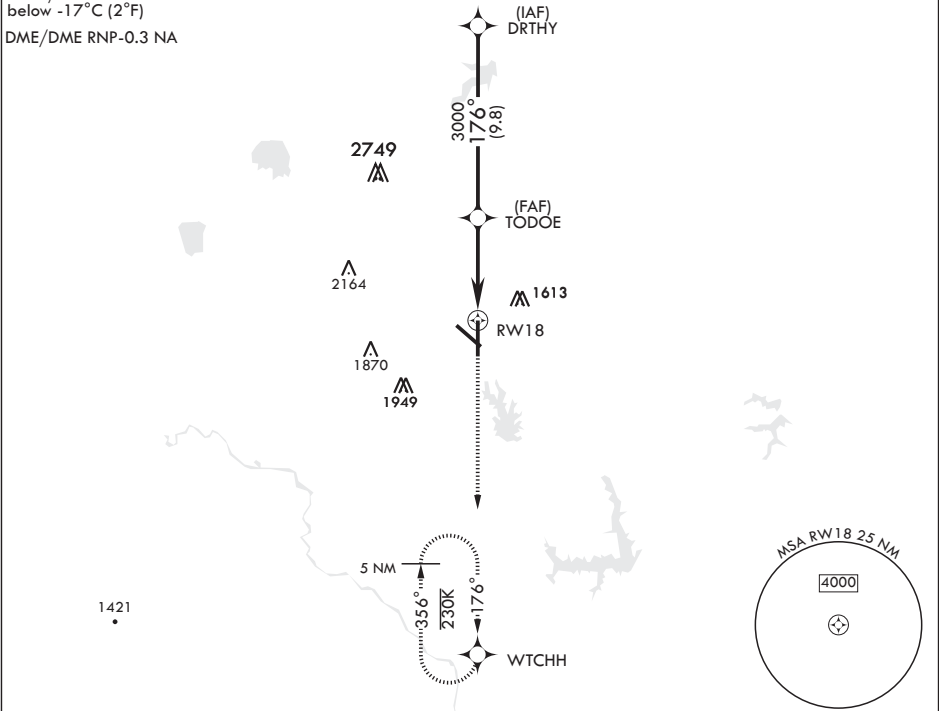
APCH CRS	Rwy Idg	11,100
176°	THRE	1260
	Arpt Elev	1291

AL-299 (USAF)

TINKER AFB (KTIK)

* Cat E Circling not authorized in sector S of Rwy 13-31 and W of Rwy 18-36.		SALS A2	MISSED APPROACH: Climb to 4000 direct WTCHH waypoint and hold.		
ATIS★ 270.1	OKE CITY APP CON 124.2 336.4	TOWER 124.45 251.05	GND CON 121.8 275.8	CLNC DEL 119.7 335.8	ASR

For uncompensated Baro-VNAV systems, LNAV/VNAV NA below -17°C (2°F)  
DME/DME RNP-0.3 NA



EMERG SAFE ALT 100 NM 4700 FROM RW18

DRTHY		VGSI and descent angles not coincident.		4000	WTCHH	ELEV 1291	THRE 1260
4000		176°		TODOE		GP 3.00° TCH 50	
		3000		↑ 1.4 NM to RW18		5.2 NM	
CATEGORY	A	B	C	D	E		
LNAV/VNAV DA	1720-1¼		460	(500-1¼)			
LNAV MDA	1720/40 460 (500-¾)		1720/55	460	(500-1)		
CIRCLING*	1820-1 529 (600-1)		2000-2 709 (800-2)	2040-2½ 749 (800-2½)	2040-2¾ 749 (800-2¾)	HIRL all Rwys	

OKLAHOMA CITY, OKLAHOMA

35°25'N - 97°23'W

TINKER AFB (KTIK)

Orig 14SEP17

RNAV (GPS) RWY 18