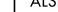
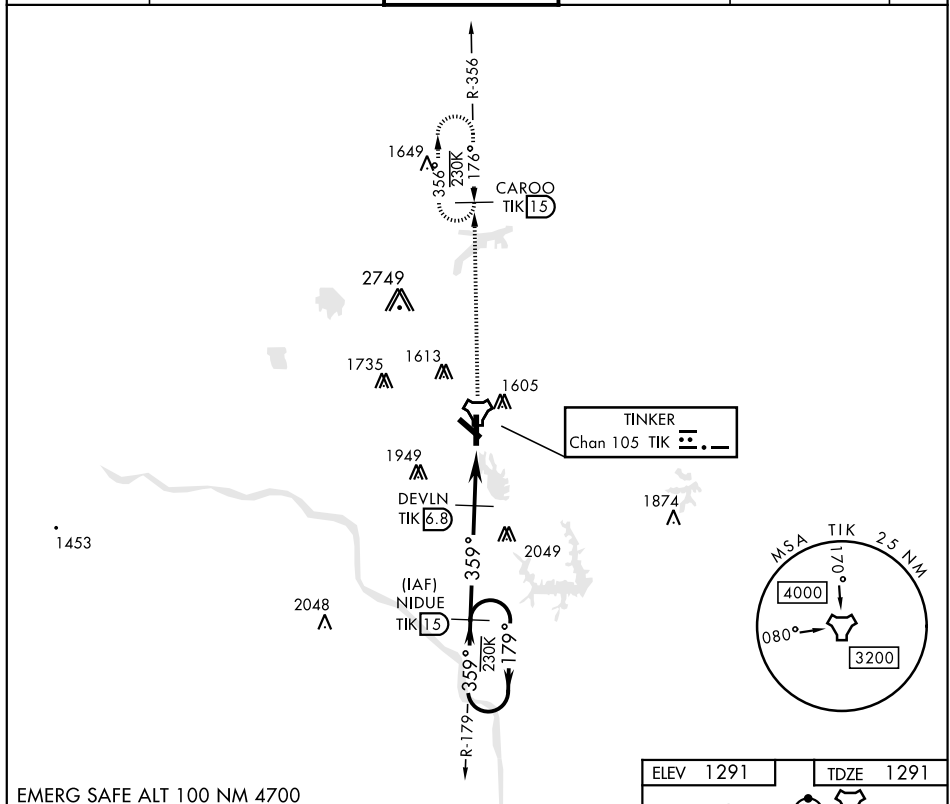


TACAN Z RWY 36

TACAN TIK Chan 105		APCH CRS 359°	Rwy Idg 11,100 TDZE 1291 Arpt Elev 1291	AL-299 [USAF]		TINKER AFB (KTIK)	
▼ * When ALS inop, increase CAT AB RVR to 50 and vis to 1 mile, CAT DECE increase vis by ½ mile. ** CAT E Circling not authorized in sector S of Rwy 13-31 and W of Rwy 18-36. Circling N/A to Rwy 18.				ALSF-1 		MISSED APPROACH: Climb to 4000 on TIK TACAN R-356 to CAROO and hold.	
ATIS ★ 270.1	OKE CITY APP CON 120.45 288.325		TINKER TOWER 124.45 251.05		GND CON 121.8 275.8	CLNC DEL 119.7 335.8	ASR



EMERG SAFE ALT 100 NM 4700

