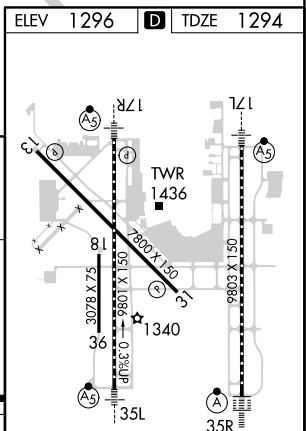
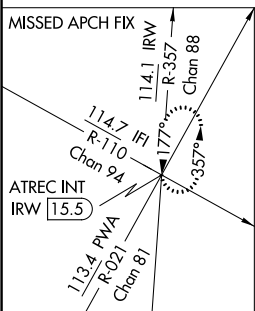


ILS RWY 35R (CAT II)
WILL ROGERS WORLD (OKC)

ALSF-2

MISSED APPROACH: Climb to 5000 on heading 356° and on IRW VORTAC R-357 to ATREC INT/IRW 15.5 DME and hold, continue climb-in-hold to 5000.

DME REQUIRED



REIL Rwy 13 and 31
TDZ/CL Rwy 35R
MIRL Rwy 13-31
HIRL Rwy 17L-35R and 17R-35L