

LOC/DME I-EXR 110.9 Chan 46	APP CRS 176°	Rwy Idg 9802 TDZE 1287 Apt Elev 1296	ILS or LOC RWY 17L WILL ROGERS WORLD (OKC)
---	------------------------	---	---

⚠

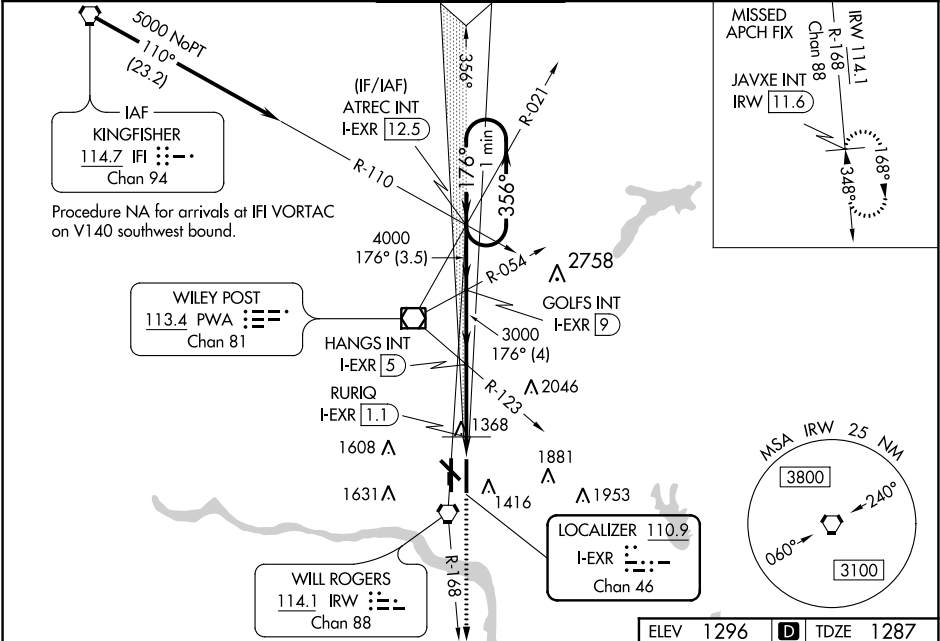
ASR

ADF or DME required. For inop ALS, increase S-ILS 17L Cat E visibility to RVR 4000 and S-LOC 17L Cat E visibility to 1 3/4 SM and RURIQ Fix Minimums S-LOC 17L Cat E visibility to RVR 6000. Simultaneous approach authorized.
** RVR 1800 authorized with use of FD or AP or HUD to DA.

MALSR

MISSED APPROACH: Climb to 5000 on heading 180° and on IRW VORTAC R-168 to JAVXE INT/IRW 11.6 DME and hold, continue climb-in-hold to 5000.

D-ATIS 125.85	OKE CITY APP CON 124.6 266.8	ROGERS TOWER 119.35 269.45	GND CON 121.9 348.6	CLNC DEL 124.35
-------------------------	--	--------------------------------------	-------------------------------	---------------------------



One Minute Holding Pattern

Use I-EXR DME when on localizer course.

CATEGORY	A	B	C	D	E
S-ILS 17L **	1487/24 200 (200-1/2)				
S-LOC 17L	1740/24	453 (500-1/2)	1740/45	453 (500-3/4)	
CIRCLING	1740-1	1760-1	1960-1 3/4	2000-2 1/4	2240-3
	444 (500-1)	464 (500-1)	664 (700-1 3/4)	704 (800-2 1/4)	944 (1000-3)
RURIQ FIX MINIMUMS					
S-LOC 17L	1680/24	393 (400-1/2)	1680/35	393 (400-3/4)	
CIRCLING	1740-1	1760-1	1960-1 3/4	2000-2 1/4	2240-3
	444 (500-1)	464 (500-1)	664 (700-1 3/4)	704 (800-2 1/4)	944 (1000-3)

ELEV 1296 D TDZE 1287

MIRL Rwy 13-31
TDZ/CL Rwy 35R
HIRL Rwy 17L-35R and 17R-35L
REIL Rwy 13 and 31

FAF to MAP 5.2 NM

Knots	60	90	120	150	180
Min:Sec	5:12	3:28	2:36	2:05	1:44