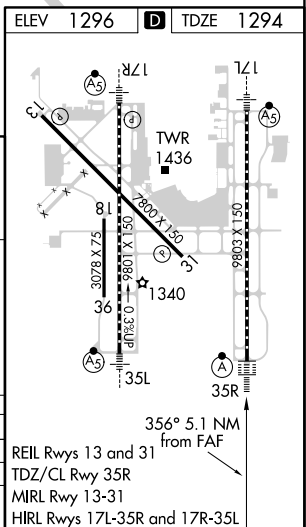


ILS or LOC RWY 35R  
WILL ROGERS WORLD (OKC)

**MISSED APPROACH:** Climb to 5000 on heading 356° and on IRW VORTAC R-357 to ATREC INT/IRW 15.5 DME and hold, continue climb-in-hold to 5000.

## DME REQUIRED



REIL Rwy 13 and 31  
TDZ/CL Rwy 35R  
MIRL Rwy 13-31  
HIRL Rwy 17L-35R and 17R-35L