

WAAS CH <b>56503</b> <b>W17B</b>	APP CRS <b>176°</b>	Rwy Idg <b>9802</b> TDZE <b>1287</b> Apt Elev <b>1296</b>
--	------------------------	---

RNAV (GPS) Y RWY 17L

WILL ROGERS WORLD (OKC)

⚠

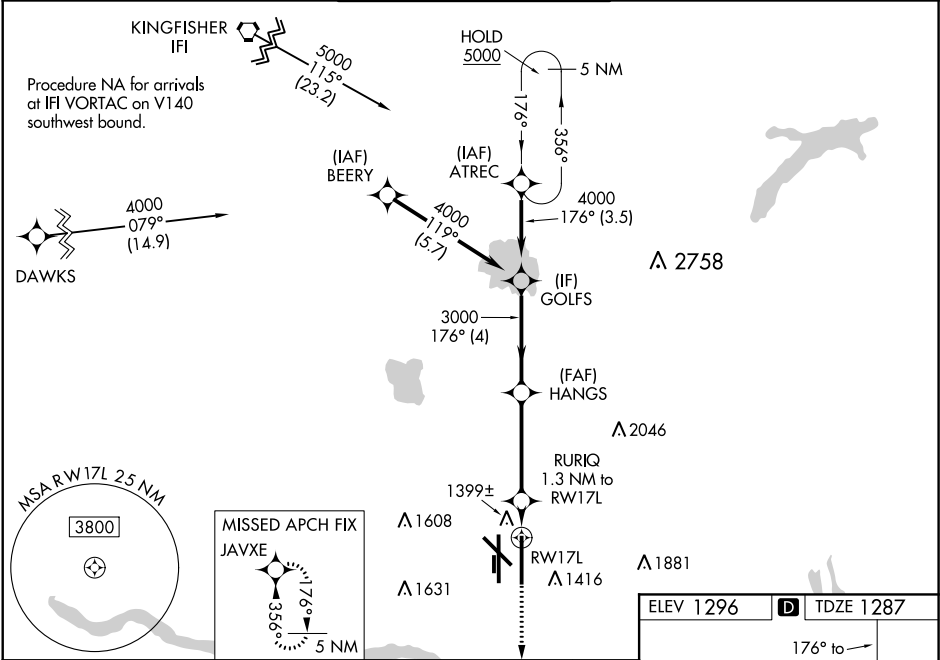
ASR

For uncompensated Baro-VNAV systems, LNAV/VNAV NA below -12°C (11°F) or above 54°C (130°F). DME/DME RNP-0.3 NA. For inop MALS/R, increase LPV Cat E visibility to RVR 4000, LNAV/VNAV Cat E visibility to RVR 4500, and LNAV all Cats visibility to RVR 5500. Simultaneous approach authorized with Rwy 17R. LNAV procedure NA during simultaneous operations. Use of FD or AP providing RNAV track guidance required during simultaneous operations. \*\*RVR 1800 authorized with use of FD or AP or HUD to DA.

MALS/R

MISSED APPROACH:  
Climb to 5000 direct JAVXE and hold, continue to climb-in-hold to 5000.

D-ATIS <b>125.85</b>	OKE CITY APP CON <b>124.6 266.8</b>	ROGERS TOWER <b>119.35 269.45</b>	GND CON <b>121.9 348.6</b>	CLNC DEL <b>124.35</b>
-------------------------	--	--------------------------------------	-------------------------------	---------------------------



GOLFS					
HANGS					
JAVXE					
RURIQ 1.3 NM to RWY 17L					
RWY 17L					
*LNAV only.					
GP 3.00° TCH 59					
4 NM 3.9 NM 1.3 NM					
CATEGORY	A	B	C	D	E
LPV DA**	1487/24		200 (200-½)		
LNAV/VNAV DA	1590/24		303 (300-½)		
LNAV MDA	1660/24	373 (400-½)	1660/35		373 (400-¾)
CIRCLING	1740-1 444 (500-1)	1760-1 464 (500-1)	1960-1¾ 664 (700-1¾)	2000-2¼ 704 (800-2¼)	2240-3 944 (1000-3)

