

LOC/DME I-TTL 110.55 Chan 42 (Y)	APP CRS 360°	Rwy Idg 6015 TDZE 224 Apt Elev 224
--	------------------------	---

ILS or LOC RWY 36

STUTT GART MUNI CARL HUMPHREY FIELD (SGT)

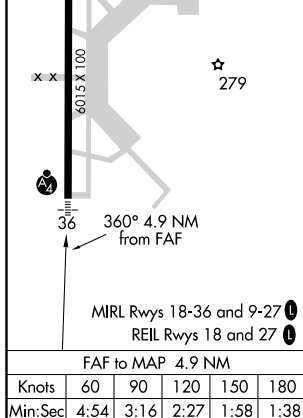
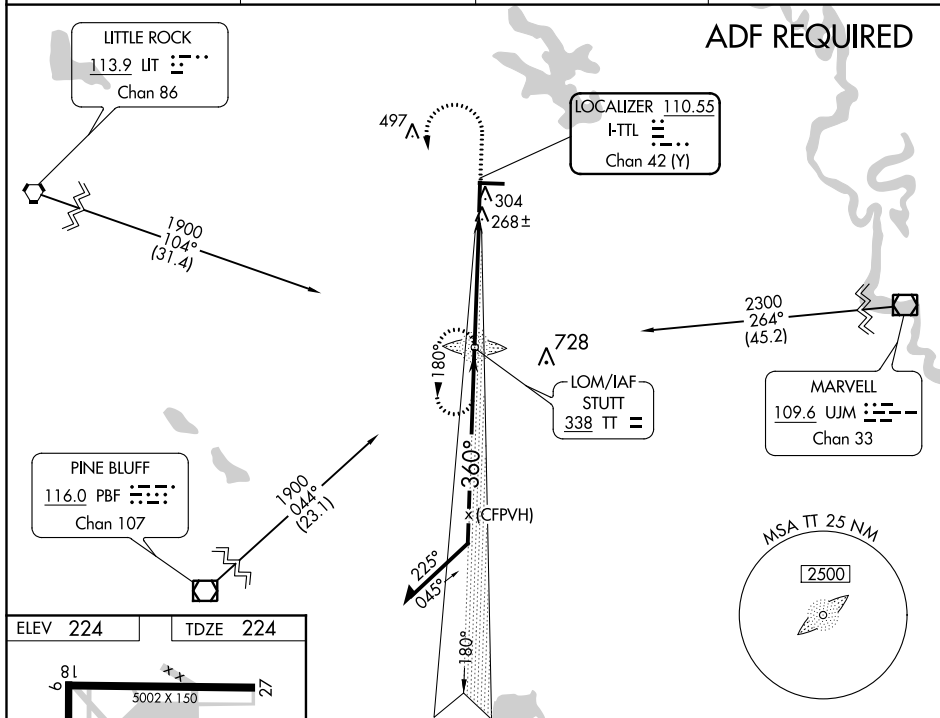
▼
▲ When local altimeter setting not received, use Bill and Hillary Clinton National/Adams Field altimeter setting and increase all DA/MDA 100 feet. VDP NA with Bill and Hillary Clinton National/Adams Field altimeter setting. For inop MALSf when using Bill and Hillary Clinton National/Adams Field altimeter setting, increase ILS all Cats visibility to 1 mile. Night landing Rwy 9 and 27 NA.

MALSF



MISSED APPROACH:
Climb to 800, then
climbing left turn to
1900 direct TT LOM
and hold.

AWOS-3PT 119.025	LITTLE ROCK APP CON 135.4 353.6	CLNC DEL 123.7	UNICOM 122.8 (CTAF) 0
----------------------------	---	--------------------------	---------------------------------

[illegible]

STUTTGART, ARKANSAS

Orig-C 22JUN17

STUTT GART MUNI CARL HUMPHREY FIELD (SGT)

34°36'N-91°34'W

ILS or LOC RWY 36