

WAAS CH 58303 W18A	APP CRS 180°	Rwy Idg 6015 TDZE 224 Apt Elev 224
--	------------------------	---

RNAV (GPS) RWY 18

STUTTGART MUNI CARL HUMPHREY FIELD (SGT)

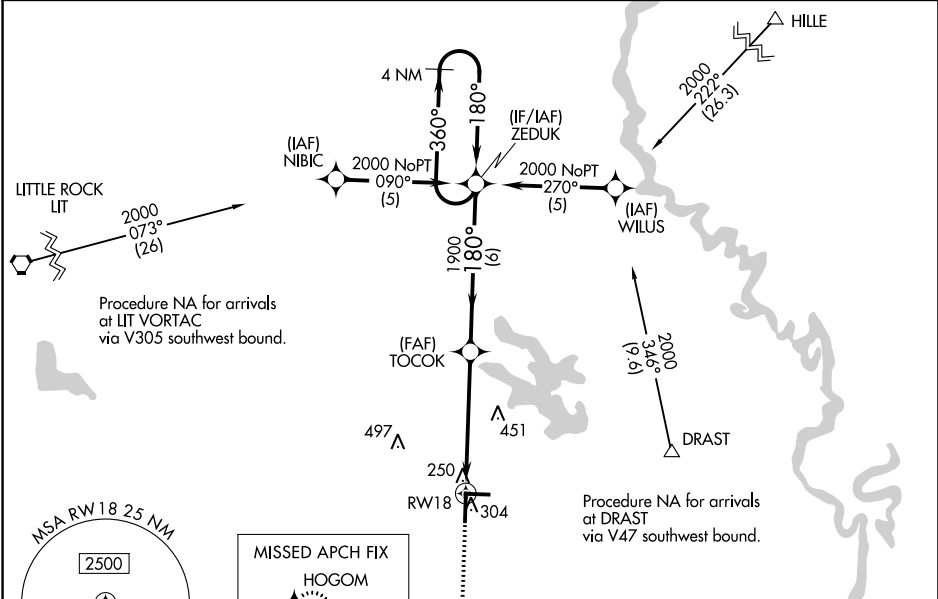
▼

▲

For uncompensated Baro-VNAV systems, LNAV/VNAV NA below -15°C (5°F) or above 48°C (118°F). DME/DME RNP-0.3 NA. When local altimeter setting not received, use Bill and Hillary Clinton National/Adams Field altimeter setting and increase all DAs 82 feet and all MDAs 100 feet. Baro-VNAV NA when using Bill and Hillary Clinton National/Adams Field altimeter setting. VDP NA when using Bill and Hillary Clinton National/Adams Field altimeter setting.

MISSED APPROACH: Climb to 2000 direct HOGOM and hold.

AWOS-3PT 119.025	LITTLE ROCK APP CON 135.4 353.6	CLNC DEL 123.7	UNICOM 122.8 (CTAF) 0
----------------------------	---	--------------------------	---------------------------------



4 NM Holding Pattern ZEDUK

2000 ← 360° 180° →

GP 3.00° TCH 45

TOCOK

1900

6 NM

4 NM

1.1

RW18

*1.1 NM to RW18 *LNAV only.

2000 HOGOM

CATEGORY	A	B	C	D
LPV DA	474-1 250 (300-1)			
LNAV/VNAV DA	520-¾ 296 (300-¾)		520-1 296 (300-1)	
LNAV MDA	620-¾ 396 (400-¾)		620-1¼ 396 (400-1¼)	
CIRCLING	660-1 436 (500-1)	680-1 456 (500-1)	680-1½ 456 (500-1½)	780-2 556 (600-2)

ELEV 224 TDZE 224

180° to RW18

81

5002 X 150

27

6015 X 100

36

279

MIRL Rwy 18-36 and 9-27 0

REIL Rwy 18 and 27 0