

WAAS CH 97311 W36A	APP CRS 360°	Rwy Idg 6015 TDZE 224 Apt Elev 224
----------------------------------------	------------------------	---------------------------------------------------------------

RNAV (GPS) RWY 36

STUTTGART MUNI CARL HUMPHREY FIELD (SGT)

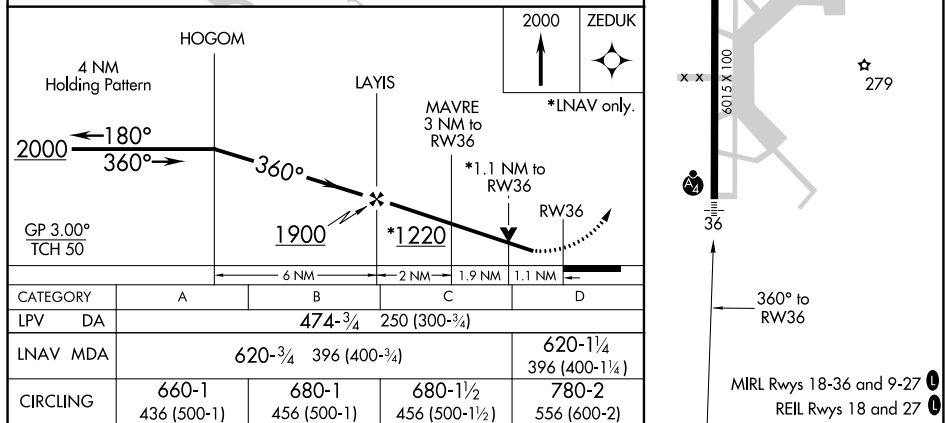
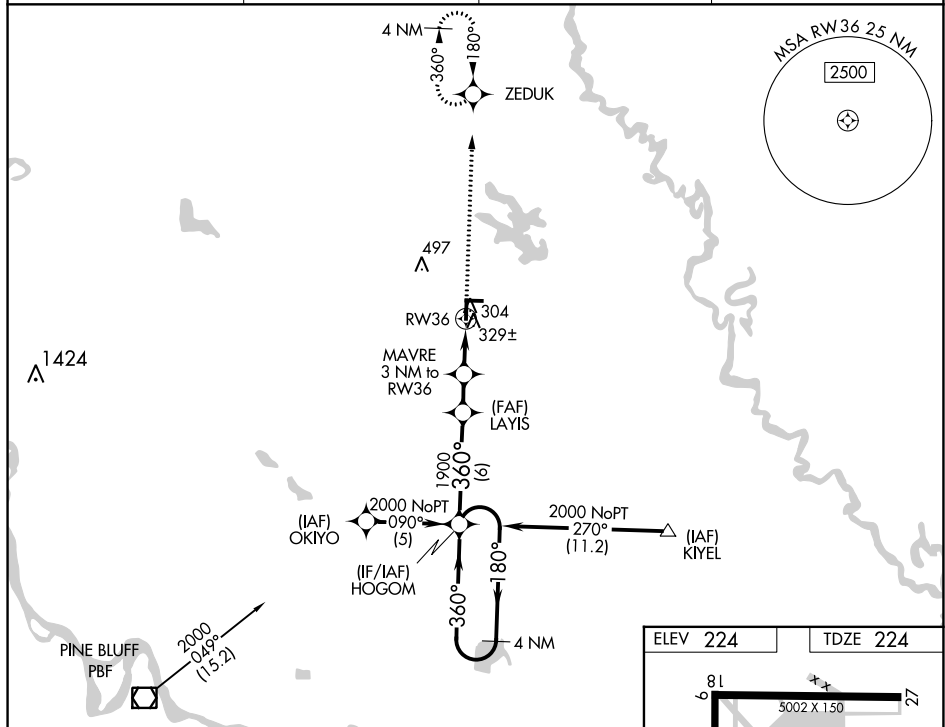
- A** DME/DME RNP-0.3 NA. When local altimeter setting not received, use Bill and Hillary Clinton National/Adams Field altimeter setting and increase LPV DA to 556 and all visibilities $\frac{1}{2}$ mile, increase all MDA 100 feet. For Inop MALSF when using Bill and Hillary Clinton National/Adams Field altimeter setting, increase LPV all Cots visibility to 1 $\frac{1}{2}$ mile. VDP NA when using Bill and Hillary Clinton National/Adams Field altimeter setting.

MALSF



MISSED APPROACH:
Climb to 2000 direct
ZEDUK and hold.

AWOS-3PT 119.025	LITTLE ROCK APP CON 135.4 353.6	CLNC DEL 123.7	UNICOM 122.8 (CTAF) 0
----------------------------	-------------------------------------------	--------------------------	----------------------------------------



STUTTGART, ARKANSAS

Amdt 1C 22JUN17

STUTT GART MUNI CARL HUMPHREY FIELD (SGT)

34°36'N-91°34'W

RNAV (GPS) RWY 36