

LOC/DME I-TXK	APP CRS	Rwy Idg	6601
111.9	220°	TDZE	384
Chan 56		Apt Elev	390

ILS or LOC RWY 22

TEXARKANA RGNL-WEBB FIELD (TXK)

⚠

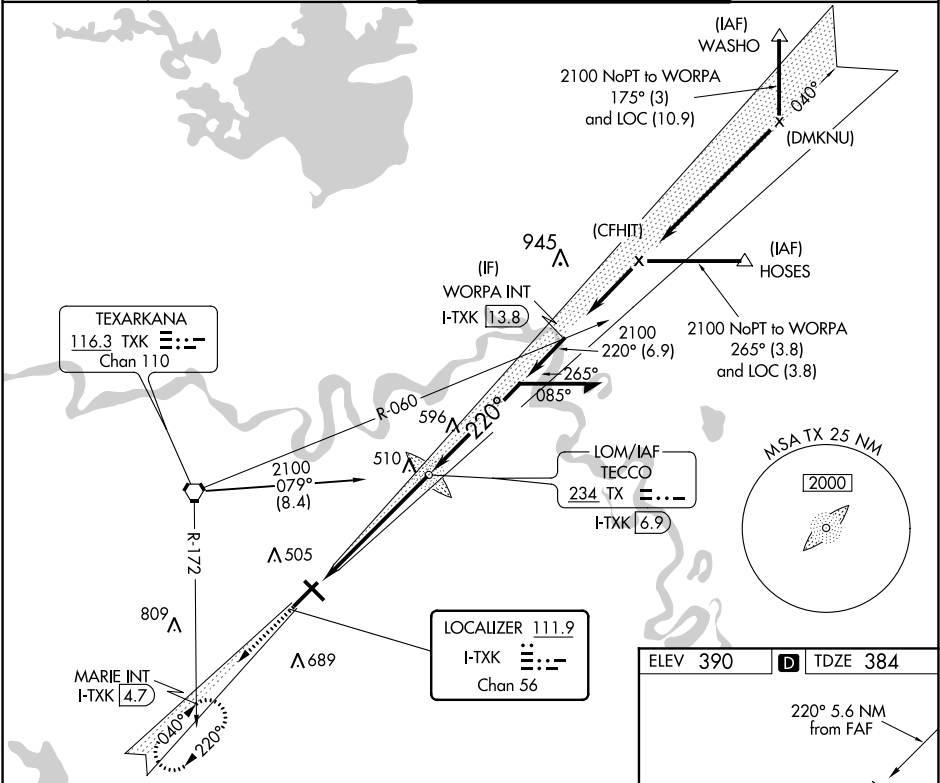
When local altimeter setting not received, use J Lynn Helms Sevier County altimeter setting and increase all DA/MDA 100 feet. Increase S-LOC 22 Cats C/D and Circling Cats C/D visibility ¼ mile. For inoperative MALSR when using J Lynn Helms Sevier County altimeter setting, increase S-ILS 22 all Cats visibility to 1. VDP NA when using J Lynn Helms Sevier County altimeter setting.

MALSR

MISSED APPROACH:

Climb to 2000 via I-TXK southwest course to MARIE Int/I-TXK 4.7 DME and hold.

ATIS	FORT WORTH CENTER	TEXARKANA TOWER ★	GND CON
120.2	123.925 269.475	123.875 (CTAF) 0 235.625	119.225



2000	MARIE INT I-TXK 4.7	TECCO LOM I-TXK 6.9	Remain within 10 NM
I-TXK SW crs			
I-TXK 1.3	I-TXK 2.4	2097	040°
			220°
			2100
			2100
			GS 2.75° TCH 51
	1 NM	4.6 NM	
CATEGORY	A	B	C
S-ILS 22		584-½ 200 (200-½)	
S-LOC 22	760-½	376 (400-½)	760-¾ 376 (400-¾)
CIRCLING	820-1 430 (500-1)	860-1 470 (500-1)	900-1½ 510 (600-1½) 1000-2 610 (700-2)

