

WAAS Ch 87099 W13A	APP CRS 130°	Rwy Idg 4559 TDZE 387 Apt Elev 390
--	------------------------	---

RNAV (GPS) RWY 13

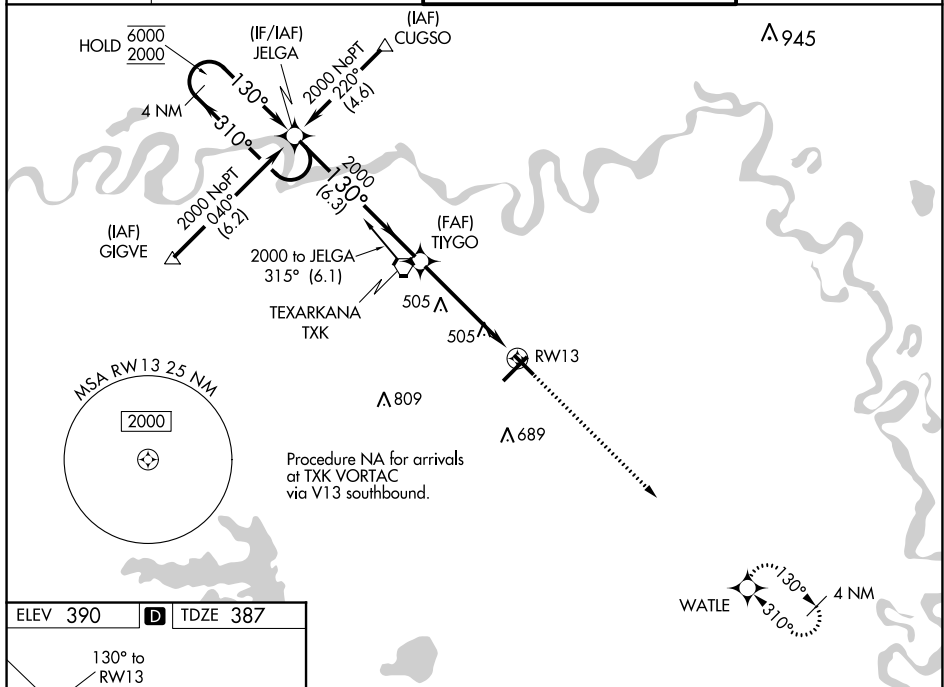
TEXARKANA RGNL-WEBB FIELD (TXK)

RNP APCH.

⚠ Baro-VNAV and VDP NA when using De Queen altimeter setting. Rwy 13 helicopter visibility reduction below $\frac{3}{4}$ SM NA. For uncompensated Baro-VNAV systems, LNAV/VNAV NA below -15° or above 54°C. When local altimeter setting not received, use De Queen altimeter setting and increase all DA/MDA 100 feet; increase LNAV/VNAV all Cats and LNAV Cat C/D visibility $\frac{3}{8}$ SM, and Circling Cat C/D visibility $\frac{1}{4}$ SM.

MISSED APPROACH.
Climb to 2000 direct
WATLE and hold.

ATIS 120.2	FORT WORTH CENTER 123,925 269,475	TEXARKANA TOWER ★ 123,875 (CTAF) 0 235,625	GND CON 119,225
----------------------	---	--	---------------------------



The diagram illustrates a four-segment RNAV approach procedure. It begins with a 4 NM Holding Pattern at 6000 ft MSL. The procedure continues through segments A, B, C, and D, each with specific distances and headings. Segment A is 6.3 NM long, Segment B is 3.8 NM long, and Segment C is 1.1 NM long. The final segment D leads to RW13. Key altitude changes are indicated: 6000 ft MSL, 2000 ft MSL, and a glide path (GP) of 3.00° leading to a threshold crossing height (TCH) of 54 ft. The diagram also includes symbols for 2000 and WATLE, and a note indicating that the procedure is INAV only.