

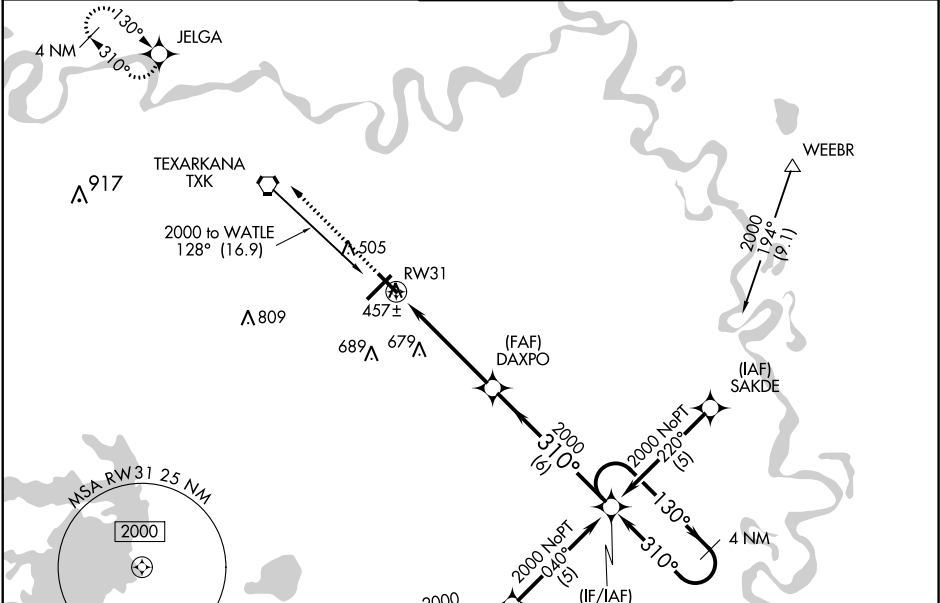
WAAS Ch 49199 W31A	APP CRS 310°	Rwy Idg 4559 TDZE 390 Apt Elev 390
----------------------------------------	------------------------	---------------------------------------------------------------

RNAV (GPS) RWY 31
TEXARKANA RGNL-WEBB FIELD (TXK)

⚠ DME/DME RNP-0.3 NA. Visibility reduction by helicopters NA. For uncompensated Baro-VNAV systems, LNAV/VNAV NA below -15°C (5°F) or above 48°C (118°F). When local altimeter setting not received, use J Lynn Helms Sevier County altimeter setting and increase all DA/MDA 100 feet, increase LPV and LNAV/VNAV all Cats, and LNAV Cat C visibility ¼ mile, LNAV Cat D visibility ½ mile and circling Cat C and D visibility ¼ mile. Baro-VNAV NA when using J Lynn Helms Sevier County altimeter setting. When VGSI inoperative, procedure NA at night.

MISSED APPROACH:
Climb to 2000 direct JELGA and hold.

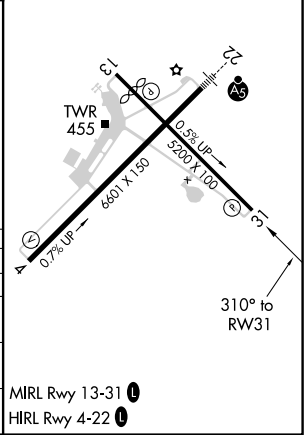
ATIS 120.2	FORT WORTH CENTER 123.925 269.475	TEXARKANA TOWER ★ 123.875 (CTAF) 0 235.625	GND CON 119.225
----------------------	---------------------------------------------	------------------------------------------------------	---------------------------



ELEV 390	D TDZE 390
----------	-------------------

2000 JELGA VGSI and RNAV glidepath not coincident.

CATEGORY	A	B	C	D
LPV DA	645-1 255 (300-1)			
LNAV/VNAV DA	707-1¼ 317 (400-1¼)			
LNAV MDA	920-1 530 (600-1)	920-1½ 530 (600-1½)	920-1¾ 530 (600-1¾)	
CIRCLING	920-1 530 (600-1)	920-1½ 530 (600-1½)	1000-2 610 (700-2)	



SC-1, 03 DEC 2020 to 31 DEC 2020

SC-1, 03 DEC 2020 to 31 DEC 2020