

ILS RWY 36R (CAT II)
TULSA INTL (TUL)

HOMIN
3500 to OILRR
132°
(23.8)

LOCALIZER 110.3
I-TUL :::::
Chan 40

TULSA
114.4 TUL :::::
Chan 91

114.4 TUL
R-079
Chan 91

079°
259°
114.9 OKM
R-027
Chan 9b

INOLA
TUL [17.9]

Δ 2296
912 Δ
1508 Δ
1429 Δ
1432 Δ
1080 Δ
810 Δ
809 Δ
IM
2500
1234 212° (7.7)
Δ 1294
LOM/IAF
OILRR
338 TU :::
I-TUL [7.2] Δ 2549

261° R-081 →
081°
2500
1234 212° (7.7)
Δ 1294
LOM/IAF
OILRR
338 TU :::
I-TUL [7.2] Δ 2549

3600
279°
(21.3) →

MALTS

Δ 2549

SAPPA
3500
052°
(16.4)

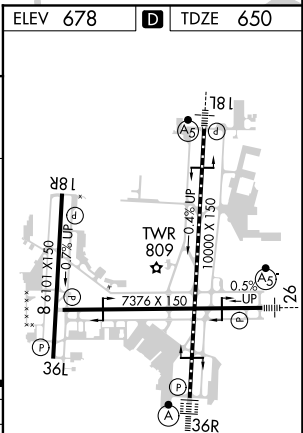
MSA TU 25 NM
[3400]
→ 260°
↑ 350°
[3600]

IF
RICKK
I-TUL [17.2]
180°
3500 NoPT
345° (14.3)

3500
360° (4)
2500
360° (4)
2500
HOLD 5000
2500
(6)
1 min
180°
WEBBZ
I-TUL [11.2]

IAF
OKMULGEE
114.9 OKM :::::
Chan 96

ELEV 678 D TDZE 650



TDZ/CL Rwy 36R
HIRL Rwy 8-26, 18L-36R and 18R-36L
REIL Rwy 8, 18R, 26 and 36L

SC-1 03 DEC 2020 to 31 DEC 2020