

WAAS CH 65925 W18A	APP CRS 179°	Rwy Idg TDZE 275 Apt Elev 279
--	------------------------	---

RNAV (GPS) RWY 18

WALNUT RIDGE RGNL (A.R.G)

▼

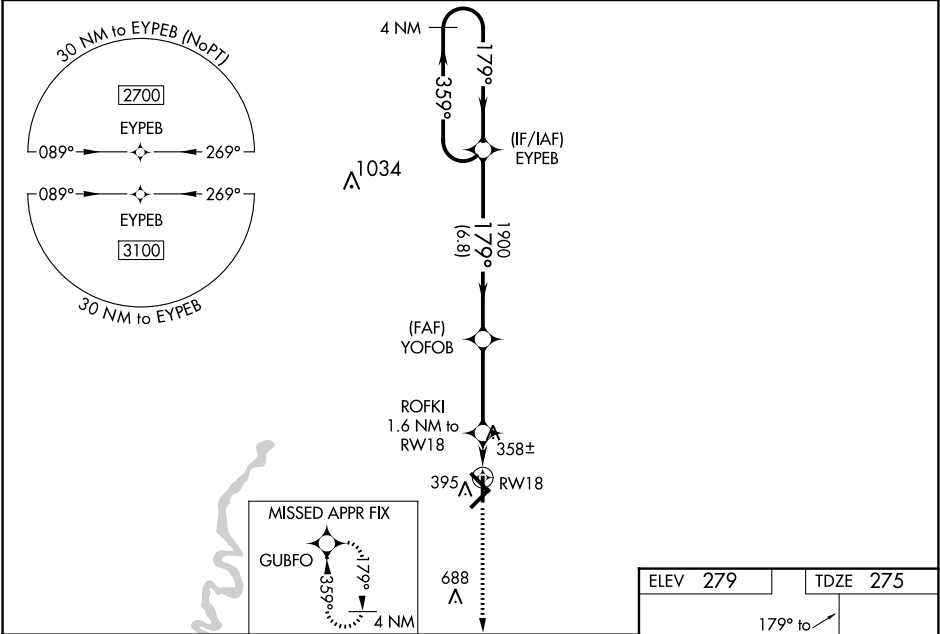
▲

For uncompensated Baro-VNAV systems, LNAV/VNAV NA below -15°C (5°F) or above 42°C (107°F). DME/DME RNP-0.3 NA. When local altimeter setting not received, use Jonesboro altimeter setting and increase all DA 54 feet and all MDA 60 feet; increase LNAV/VNAV all Cats visibility ¼ mile and LNAV Cat C and D visibility ½ mile. For inoperative ODALS, increase LPV all Cats and LNAV/VNAV all Cats visibility to ¾ mile and LNAV Cat C and D visibility to 1 mile. When using Jonesboro altimeter setting; for inoperative ODALS, increase LPV all Cats visibility to 7⁄8 mile, LNAV/VNAV all Cats visibility to 1 mile and LNAV Cat C and D visibility to 1 ½ mile. Baro-VNAV and VDP NA with Jonesboro altimeter setting.

ODALS

MISSED APPROACH:
Climb to 3100 direct GUBFO and hold.

AWOS-3PT 135.925	MEMPHIS CENTER 120.075 289.4	UNICOM 122.8 (CTAF) 0
----------------------------	--	---------------------------------



4 NM Holding Pattern		EYEB	YOFOB	ROFKI 1.6 NM to RW18	3100	GUBFO
2700 ← 359°		179° →	179°	1900	*820	*LNAV only.
GP 3.00°		TCH 45	6.8 NM	3.4 NM	0.6	1 NM
CATEGORY	A	B	C	D		
LPV DA	475-¾		200 (200-¾)			
LNAV/VNAV DA	525-¾		250 (300-¾)			
LNAV MDA	620-¾	345 (400-¾)	620-7⁄8	345 (400-7⁄8)		
CIRCLING	760-1	481 (500-1)	760-1½	840-2		
			481 (500-1½)	561 (600-2)		

