
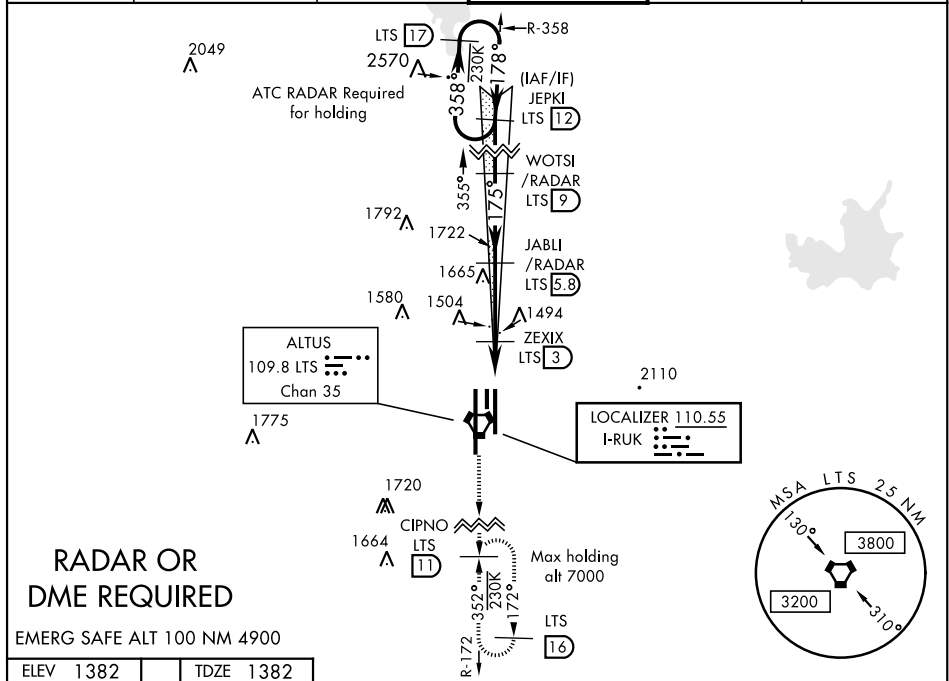


ILS or LOC RWY 17L

LOC I-RUK 110.5°		APCH CRS 175°		Rwy Idg 9001 TDZE 1382 Arprt Elev 1382	AL-482 [USAF]		ALTUS AFB (KLTS)	
▼ When ALS inop, increase CAT ABCDE RVR to 55 and vis to 1 mile. ** When ALS inop, increase CAT AB RVR to 55 and vis to 1 mile, CAT CDE vis to 1 1/2 miles. *** Circling not authorized W of Rwy 17R-35L.					SALSF 		MISSED APPROACH: Climb to 4000, intercept LTS VORTAC R-172 to CIPNO and hold.	
ATIS ★	FORT WORTH CENTER		ALTUS APP CON		ALTUS TOWER ★	GND CON	CLNC DEL	
109.8 273.5	133.5	350.35	125.1	353.7	119.65 254.4	121.85 275.8	120.65 284.7	



EMERG SAFE ALT 100 NM 4900

ELEV 1382 TDZE 1382

175° 4.6 NM from FAF

ASSAULT STRIP

TWR 1496 1524

13,440 x 150 3500 x 90 9001 x 150

175° 0.4% UP 0.3% DOWN

35L HIRL all Rwys

35R

VORTAC

ZEXIX 3

JABLI 5.8 /RADAR

WOTSI 9 /RADAR

JEPKI R-358 12

358° 175° 178°

3500 4000

GS 3.00° TCH 46

CATEGORY	A	B	C	D	E
S-ILS 17L	1582/40	200	(200-¾)		
S-LOC 17L*	1760/40	378	(400-¾)		
CIRCLING	1780-1 398 (400-1)	1840-1 458 (500-1)	1860-1½ 478 (500-1½)	1940-2 558 (600-2)	2100-2½ 718 (800-2½)

WITHOUT LAST STEPDOWN FIX

S-LOC 17L**	1880/40	498 (500-¾)	1880/60	498 (500-1½)
CIRCLING	1880-1	498 (500-1)	1880-1½ 498 (500-1½)	1940-2 558 (600-2)

FAF to MAP 4.1 NM					
Knots	60	90	120	150	180
Min:Sec	4:06	2:44	2:03	1:38	1:22

ALTUS, OKLAHOMA
Amdt 3 16JUL20

34° 40' N-99° 16' W

ALTUS AFB	(KLTS)
-----------	--------

ILS or LOC RWY 17L