

ALTUS, OKLAHOMA

ILS or LOC RWY 35R

ALTUS AFB (KLTS)

LOC I-FNM <u>110.55</u>	APCH CRS 355°	Rwy Idg 9001 TDZE 1362 Arpt Elev 1382
-----------------------------------	-------------------------	--

AL-482 [USAF]

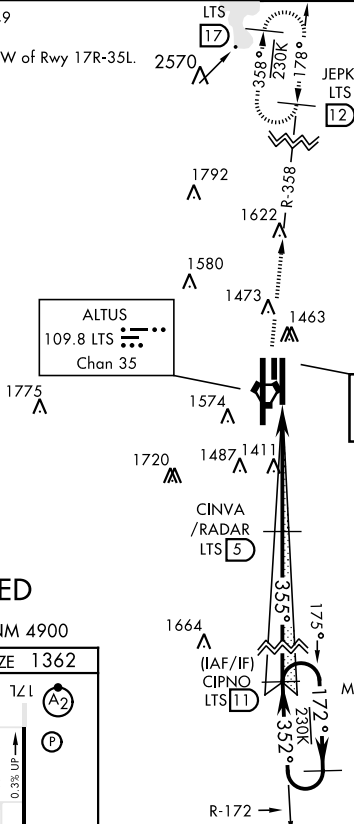


MISSED APPROACH: Climb to 4000, intercept
LTS VORTAC R-358 to 12 DME (JEPKI) and hold.

ATIS ★ 109.8 273.5	FORT WORTH CENTER 133.5 350.35	ALTUS APP CON 125.1 353.7	ALTUS TOWER ★ 119.65 254.4	GND CON 121.85 275.8	CLNC DEL 120.65 284.7
-----------------------	-----------------------------------	------------------------------	-------------------------------	-------------------------	--------------------------

2049
A
*** Circling not authorized W of Rwy 17R-35L.
2570
LTS
17
230K
178
ATC Radar required
for holding
above 4000
EPK1

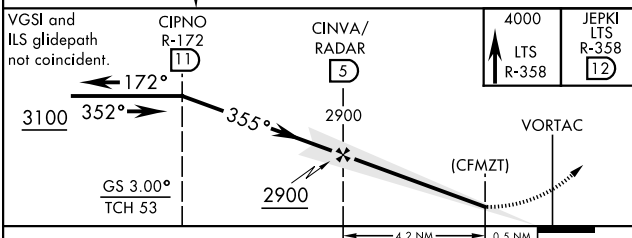
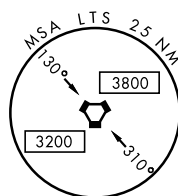
ATC Radar required
for holding
above 4000




RADAR OR
DME REQUIRED

EMERG SAFE ALT 100 NM 4900

ELEV 1382	TDZE 1362
<p>ASSAULT STRIP</p> <p>TWR 1496</p> <p>1524</p> <p>1516</p> <p>35L</p> <p>35R</p> <p>1437</p> <p>147R</p> <p>13,440 x 150</p> <p>3559</p> <p>0.45° UP</p> <p>0.35° UP</p> <p>9001 x 150</p> <p>355°</p> <p>4.7 NM from FAF</p>	
HIRL all Rwy's	
FAF to MAP 4.2 NM	
Knots	60 90 120 150 180
Min:Sec	4:12 2:48 2:06 1:41 1:24



CATEGORY	A	B	C	D	E
S-ILS 35R *	1562/24		200	(200-½)	
S-LOC 35R**	1700/24	338 (400-½)	1700/26	338	(400-½)
 CIRCling***	1780-1 398 (400-1)	1840-1 458 (500-1)	1860-1½ 478 (500-1½)	1940-2 558 (600-2)	2100-2½ 718 (800-2½)

ALTUS, OKLAHOMA
Amdt 3 16JUL20

34°40'N-99°16'W

ALTUS AFB (KLTS)

ILS or LOC RWY 35R

SC-1, 03 DEC 2020 to 31 DEC 2020

SC-1, 03 DEC 2020 to 31 DEC 2020