

ALTUS, OKLAHOMA

ILS or RNAV (GPS) Y RWY 17R

LOC I-ALT 111.3	APCH CRS 175°	Rwy ldg 13,440
		TDZE 1379
		Arpt Elev 1382

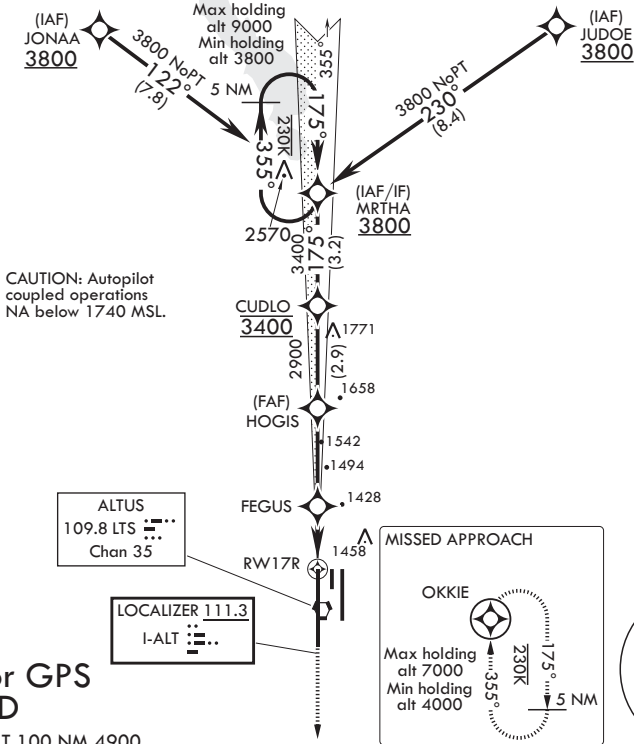
AL-482 (USAF)

ALTUS AFB (KLTS)

▼ * When ALS inop, increase CAT A8 RVR to 55, vis to 1 mile; CAT CDE RVR to 60, vis to 1 1/8 miles; ** Circling not authorized W of Rwy 17R-35L.	SALS (A2)	MISSED APPROACH: Climb to 4000 direct OKKIE and hold.
---	----------------------------	--

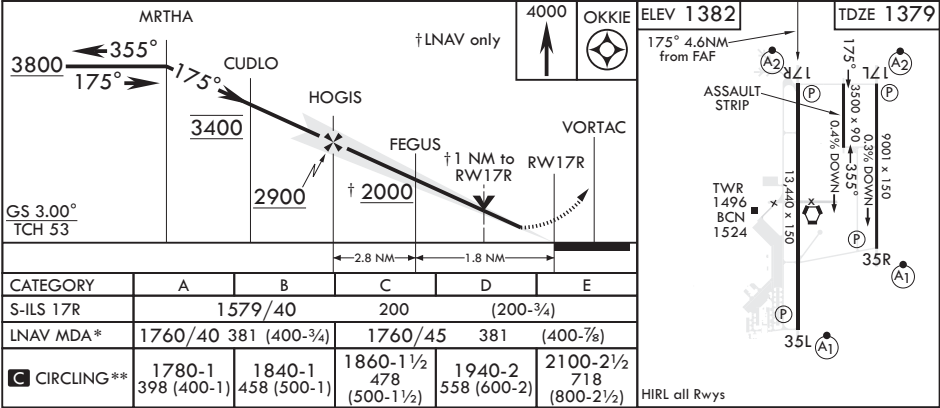
ATIS ★ 109.8 273.5	FORT WORTH CENTER 133.5 350.35	APP CON 125.1 353.7	TOWER ★ 119.65 254.4	GND CON 121.85 275.8	CLNC DEL 120.65 284.7
-------------------------------------	---	--------------------------------------	---------------------------------------	---------------------------------------	--

DME/DME RNP 0.3 NA



RNAV1 or GPS
REQUIRED

EMERG SAFE ALT 100 NM 4900



ALTUS, OKLAHOMA

34°40'N - 99°16'W

ALTUS AFB (KLTS)

Orig 23MAY19

ILS or RNAV (GPS) Y RWY 17R