

ALTUS, OKLAHOMA

ILS Z or LOC RWY 35L

LOC I-LTS <b><u>110.3</u></b>	APCH CRS <b>355°</b>	Rwy Idg <b>13,440</b> TDZE <b>1354</b> Arpt Elev <b>1382</b>
----------------------------------	-------------------------	--

AL-482 [USAF]

ALTUS AFB (KLTS)

**T** \* When ALS inop, increase RVR to 40 and vis to  $\frac{3}{4}$  mile;  
RVR 18 authorized with use of FD or AP or HUD to DA.  
\*\* When ALS inop, increase CAT ABCDE RVR to 55  
and vis to 1 mile.



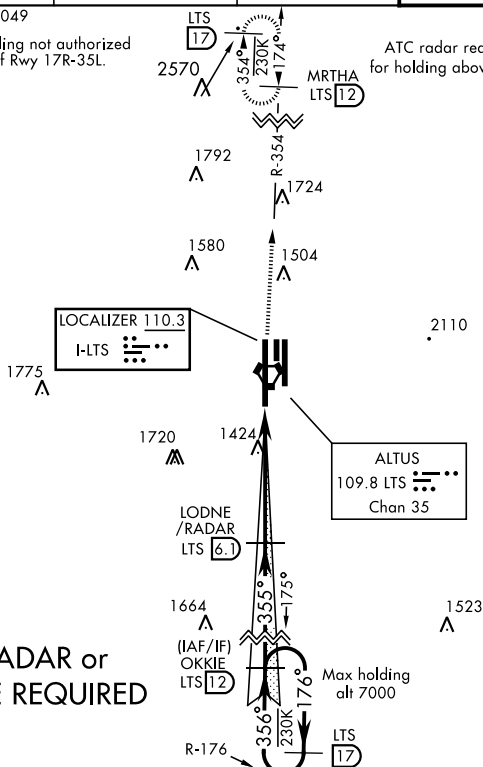
**MISSED APPROACH:** Climb to 4000, intercept  
LTS VORTAC R-354 to MRTHA and hold.

ATIS ★ 109.8 273.5	FORT WORTH CENTER 133.5 350.35	ALTUS APP CON 125.1 353.7	ALTUS TOWER ★ 119.65 254.4	GND CON 121.85 275.8	CLNC DEL 120.65 284.7
-----------------------	-----------------------------------	------------------------------	-------------------------------	-------------------------	--------------------------

A 2049

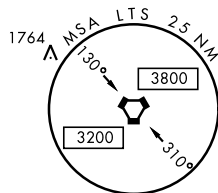
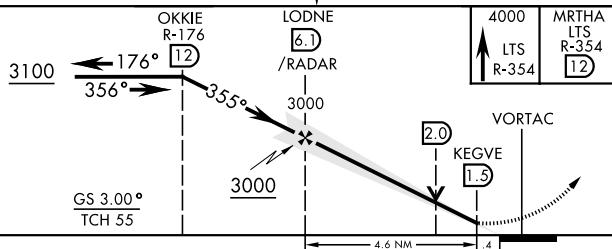
\*\*\* Circling not authorized  
W of Rwy 17R-35L.

ATC radar required  
for holding above 4000



## DME REQUIRED

EMERG SAFE ALT 100 NM 4900



FAF to MAP 4.6 NM					
Knots	60	90	120	150	180
Min:Sec	4:36	3:04	2:18	1:50	1:32

ALTUS, OKLAHOMA

34°40'N-99°16'W

ALTUS AFB (KLTS)

Amdt 1 16JUL20

ILS Z or LOC RWY 35L

SC-1, 03 DEC 2020 to 31 DEC 2020

SC-1, 03 DEC 2020 to 31 DEC 2020