

ALTUS, OKLAHOMA

RNAV (RNP) X RWY 35L

APCH CRS	Rwy Idg	13,440
355°	TDZE	1354
	Arpt Elev	1382

AL-482 (USAF)

ALTUS AFB (KLTS)

▼ \* When ALS inop, increase RVR to 45, vis to 7/8 mile.  
\*\* When ALS inop, increase RVR to 55, vis to 1 mile.

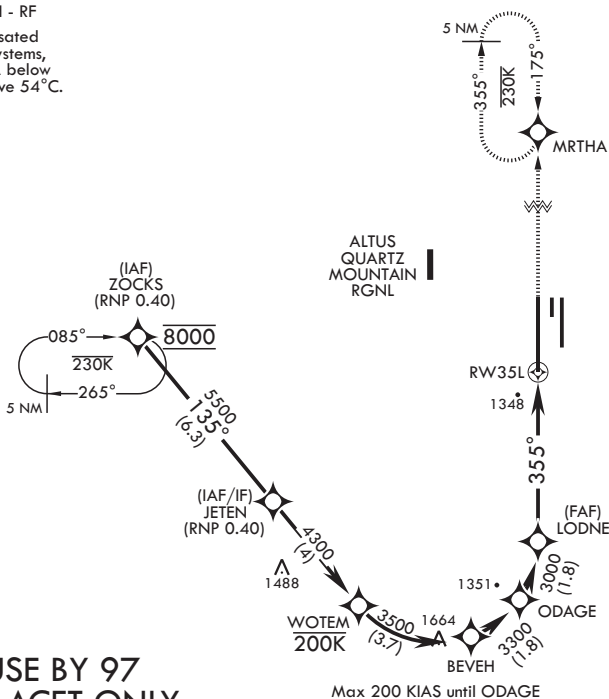
ALSF-1

MISSED APPROACH: Climb to 4000 on track 355° to MRTHA and hold.

ATIS★ 109.8 273.5	APP CON 125.1 353.7	TOWER★ 119.65 254.4	GND CON 121.85 275.8	CLNC DEL 120.65 284.7
----------------------	------------------------	------------------------	-------------------------	--------------------------

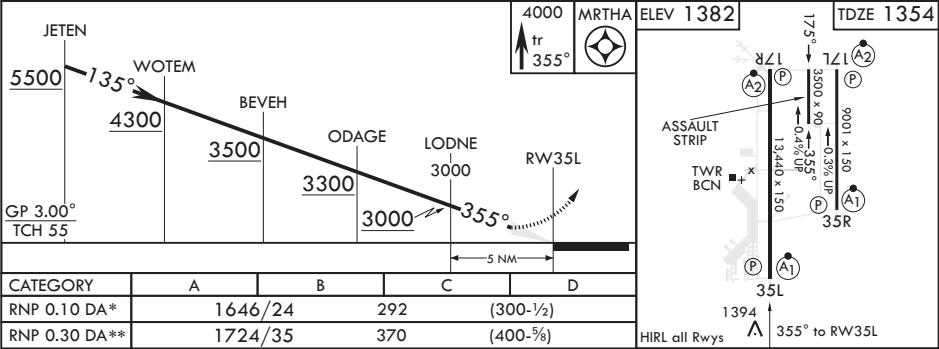
RNP AR APCH - RF

For uncompensated Baro-VNAV systems, procedure NA below -17°C or above 54°C.



FOR USE BY 97  
AMW ACFT ONLY  
AUTHORIZATION  
REQUIRED

EMERG SAFE ALT 100 NM 4900



ALTUS, OKLAHOMA

34°40'N - 99°16'W

ALTUS AFB (KLTS)

Orig 05NOV20

RNAV (RNP) X RWY 35L