

ALTUS, OKLAHOMA

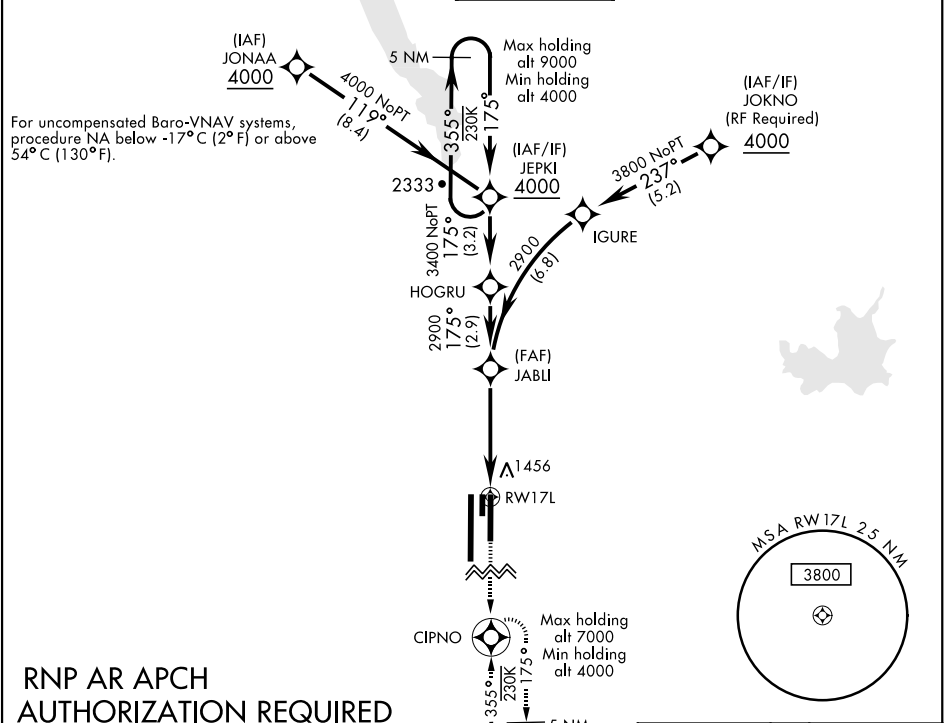
RNAV (RNP) Y RWY 17L

APCH CRS	Rwy Idg	9001
175°	TDZE	1382
	Arpt Elev	1382

AL-482 [USAF]

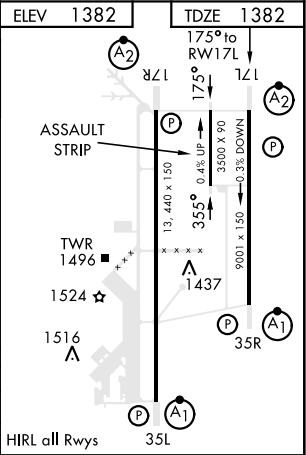
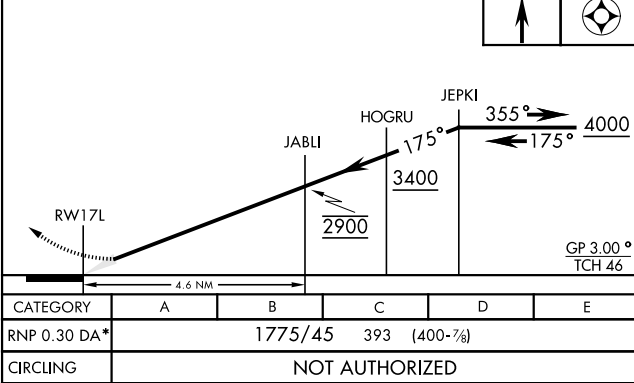
ALTUS AFB (KLTS)

*When ALS inop, increase RVR to 60, vis to 1½ miles.			SALSFMISSED APPROACH: Climb to 4000 direct CIPNO and hold.				
ATIS★		FORT WORTH CENTER	ALTUS APP CON		ALTUS TOWER★	GND CON	CLNC DEL
109.8 273.5		133.5 350.35	125.1 353.7		119.65 254.4	121.85 275.8	120.65 284.7



RNP AR APCH
AUTHORIZATION REQUIRED
EMERG SAFE ALT 100 NM 4900

See planview for multiple IF locations



ALTUS, OKLAHOMA

34° 40' N-99° 16' W

ALTUS AFB (KLTS)

Orig 16JUL20

RNAV (RNP) Y RWY 17L

SC-1, 03 DEC 2020 to 31 DEC 2020

SC-1, 03 DEC 2020 to 31 DEC 2020