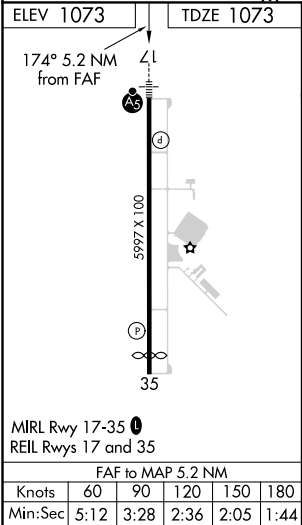
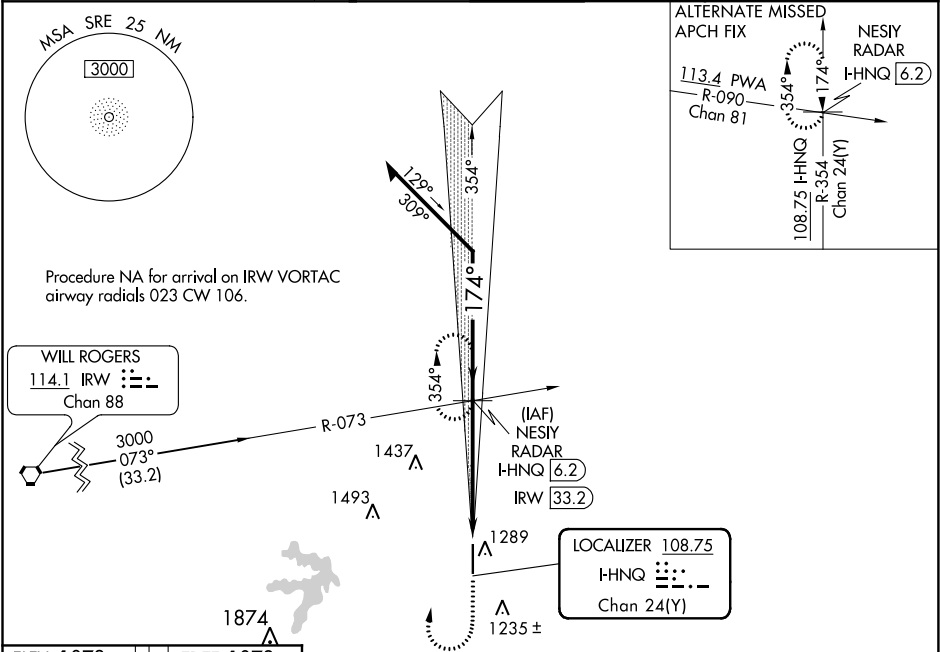


LOC/DME I-HNQ 108.75 Chan 24(Y)	APP CRS 174°	Rwy Idg TDZE Apt Elev 5997 1073 1073
---	------------------------	--

ILS or LOC RWY 17
SHAWNEE RGNL (SNL)

DME or RADAR required.	MALSR A5	MISSED APPROACH: Climb to 1600 then climbing right turn to 3000 on heading 009° and IRW R-073 to NESIY/I-HNQ 6.2 DME/RADAR and hold, continue climb-in-hold to 3000.
------------------------	-------------	--

AWOS-3 118.275	OKE CITY APP CON 120.45 288.325	UNICOM 122.7 (CTAF)
--------------------------	---	-------------------------------



1600	3000	IRW R-073	NESIY I-HNQ 6.2	NESIY I-HNQ 6.2	VGSI and ILS glidepath not coincident (VGSI Angle 3.00/TCH 52). Remain within 10 NM
*LOC only	*I-HNQ 2.3	I-HNQ 1	2800	2800	GS 3.00° TCH 58
1.3	3.9 NM				
CATEGORY	A	B	C	D	
S-ILS 17	1273-1/2	200 (200-1/2)		NA	
S-LOC 17	1520-1/2	447 (500-1/2)	1520-7/8 447 (500-7/8)	NA	
CIRCLING	1600-1	527 (600-1)	1640-1 1/2 567 (600-1 1/2)	NA	

SC-1, 03 DEC 2020 to 31 DEC 2020

SC-1, 03 DEC 2020 to 31 DEC 2020