

WAAS CH 70607 W13A	APP CRS 129°	Rwy Idg 7202 TDZE 607 Apt Elev 612
--	------------------------	---

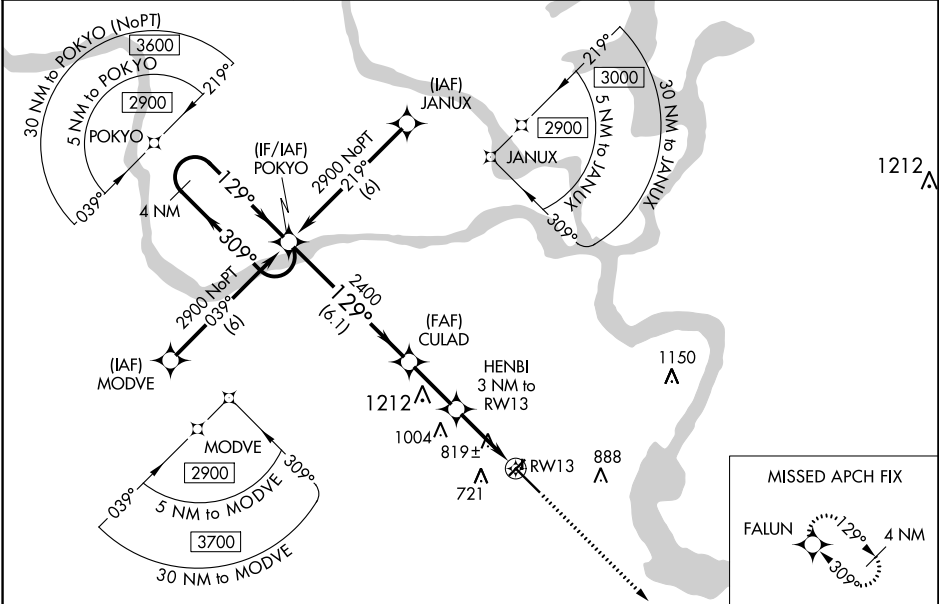
RNAV (GPS) RWY 13
MUSKOGEE-DAVIS RGNL (MKO)

▼ For uncompensated Baro-VNAV systems, procedure NA below -16°C (4°F) or above 47°C (116°F).

▲ DME/DME RNP-0.3 NA. Baro-VNAV and VDP NA when using Tahlequah altimeter setting. When local altimeter setting not received, use Tahlequah altimeter setting and increase all DA 92 feet; increase LPV visibility ½ mile all Cats. Increase LNAV/VNAV visibility ¼ mile all Cats, increase all MDA 100 feet and LNAV Cat C/D/E visibility ½ mile. Circling visibility Cat C/D ¼ mile. Circling Rwy 4, 18, 22, 36 NA at night. Rwy 4, 18, 22, 36 helicopter visibility reduction below 1 SM NA.

MISSED APPROACH:
Climb to 2800 direct FALUN and hold.

ASOS 135.025	FORT WORTH CENTER 132.2 338.35	UNICOM 122.8 (CTAF) 0
------------------------	--	---------------------------------



ELEV 612		TDZE 607			
4 NM Holding Pattern		POKYO			
2900		CULAD			
GP 3.00° TCH 50		HENBI 3 NM to RW13			
309°		*1620			
129°		*1.6 NM to RW13			
129°		RW13			
6.1 NM		2.4 NM			
1.4		1.6			
CATEGORY	A	B	C	D	E
LPV DA	857-3/4		250 (300-3/4)		
LNAV/VNAV DA	1142-2		535 (600-2)		
LNAV MDA	1180-1	573 (600-1)	1180-1 1/2	1180-1 3/4	1180-2
			573 (600-1 1/2)	573 (600-1 3/4)	573 (600-2)
CIRCLING	1180-1	568 (600-1)	1180-1 1/2	1200-2	1580-3
			568 (600-1 1/2)	588 (600-2)	968 (1000-3)

2800

FALUN

*LNAV only.

129° to RW13

1904 X 60

18

22

13

75

36

4098 X 75

0.4° UP

696

7202 X 150

0.4° UP

37

MIRL Rwy 13-31