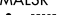
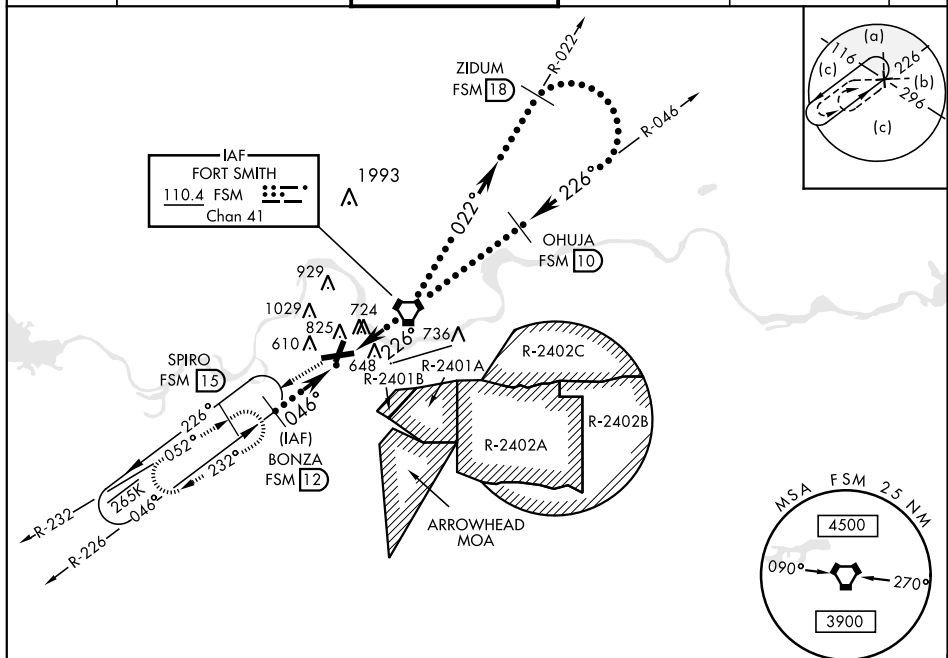


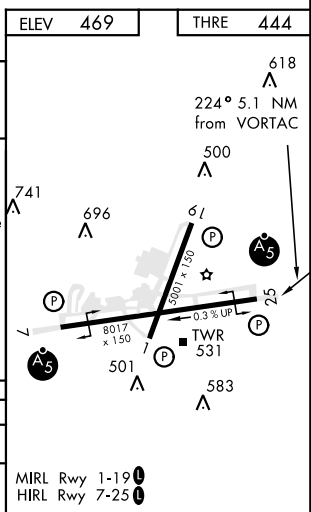
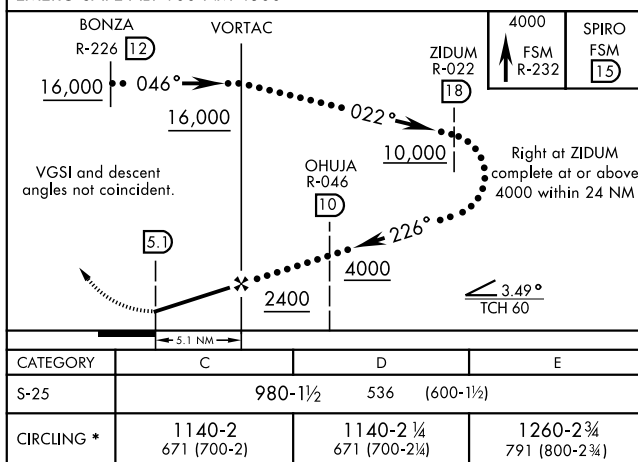
FORT SMITH, ARKANSAS

HI-VOR/DME or TACAN RWY 25

VORTAC FSM 110.4 Chan 41		APCH CRS 226°	Rwy Idg 8017 THRE 444 Arpt Elev 469	JAL-631 [USAF]	FORT SMITH REGIONAL (KFMS)	
<div>▼ * Circling NA NW Rwy 7 and 19 for CAT E. Circling NA for CAT E when R-2401B is active. Circling to Rwy 1 NA at night.</div>				<div>MALSR </div>	MISSED APPROACH: Climb to 4000 on FSM VORTAC R-232 to SPIRO (FSM R-232/15 DME) and hold, continue climb in hold to 4000.	
ATIS ★ 126.3	RAZORBACK APP CON 120.9 343.75		FORT SMITH TOWER ★ 118.3 (CTAF) 0 323.175	GND CON 121.9 275.8	CLNC DEL 133.85 278.3	ASR



EMERG SAFE ALT 100 NM 4500



FORT SMITH, ARKANSAS

35°20'N-94°22'W

FORT SMITH REGIONAL (KFMS)

Amdt 8 16035

HI-VOR/DME or TACAN RWY 25

SC-1, 03 DEC 2020 to 31 DEC 2020