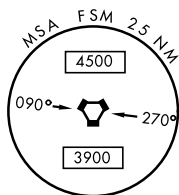
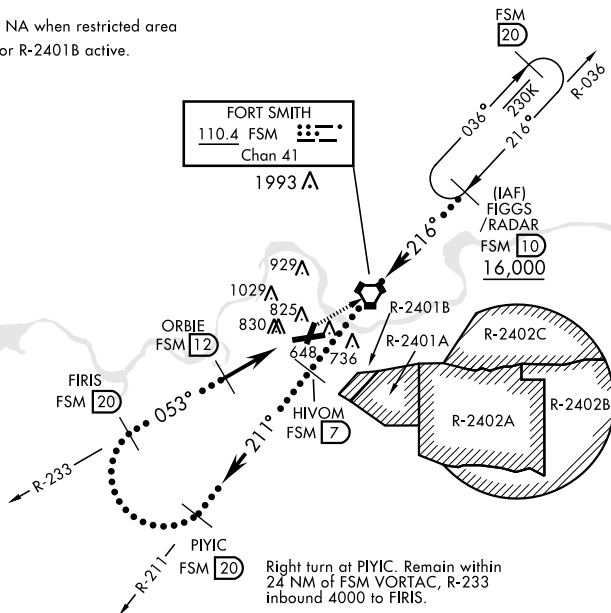


FORT SMITH, ARKANSAS

# HI-VOR/DME or TACAN RWY 7

VORTAC FSM <b>110.4</b> Chan <b>41</b>		APCH CRS <b>053°</b>	Rwy Idg <b>8017</b> TDZE <b>469</b> Arpt Elev <b>469</b>	JAL-631 [USAF]	FORT SMITH REGIONAL (KFMS)		
<div><div>V</div><div>* Circling NA NW Rwy 7 and 19 for CAT E. Circling to Rwy 1 NA at night.</div></div>				<div><div>MALSR</div><div><div>A5</div><div>00000</div></div></div>	MISSED APPROACH: Climb to 4000 direct FSM VORTAC and on R-036 to FIGGS (FSM R-036/10 DME) and hold.		
ATIS ★ <b>126.3</b>	RAZORBACK APP CON <b>120.9 343.75</b>		FORT SMITH TOWER ★ <b>118.3 (CTAF) 0 323.175</b>		GND CON <b>121.9 275.8</b>	CLNC DEL <b>133.85 278.3</b>	ASR

Procedure NA when restricted area  
R-2401A or R-2401B active.



EMERG SAFE ALT 100 NM 4500

4000	FSM	FSM R-036	ELEV 469	TDZE 469
CATEGORY	C	D	E	
S-7	1120-1½	651 (700-1½)		
CIRCLING *	1140-2 671 (700-2)	1140-2¼ 671 (700-2¼)	1260-2¾ 791 (800-2¾)	MRL Rwy 1-19 0 HIRL Rwy 7-25 0

FORT SMITH, ARKANSAS

35°20'N-94°22'W

FORT SMITH REGIONAL (KFMS)

Amtd 7 16035

# HI-VOR/DME or TACAN RWY 7

SC-1, 03 DEC 2020 to 31 DEC 2020