



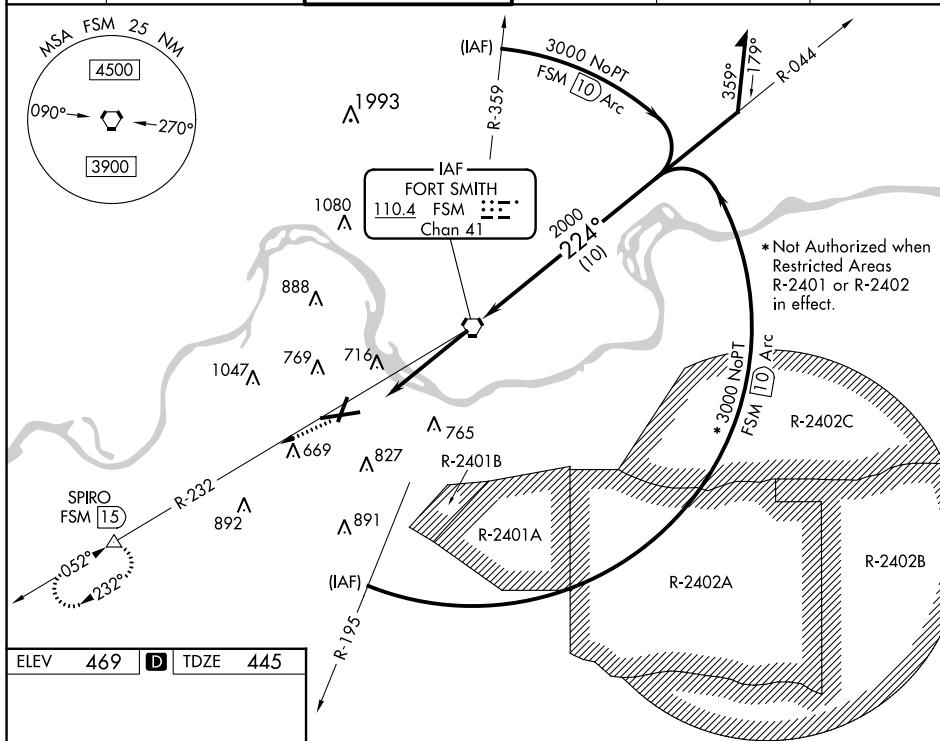


VORTAC FSM <b>110.4</b> Chan <b>41</b>	APP CRS <b>224°</b>	Rwy Idg <b>8017</b> TDZE <b>445</b> Apt Elev <b>469</b>
----------------------------------------------	------------------------	---------------------------------------------------------------

VOR or TACAN RWY 25  
FORT SMITH RGNL (FSM)

  ASR	Inoperative table does not apply. Circling NA northwest of Rwy's 7 and 19 for Cat E. Circling Cat E NA when R-2401B active.		  MALS R	MISSED APPROACH: Climb to 4000 via FSM R-232 to SPIRO Int/15 DME and hold.			
	ATIS <b>126.3</b>	RAZORBACK APP CON★ <b>120.9 343.75</b>	FORT SMITH TOWER★ <b>118.3(CTAF) 0 323.175</b>	GND CON <b>121.9 275.8</b>	CLNC DEL <b>133.85 278.3</b>	UNICOM <b>122.95</b>	



## DME REQUIRED

