

VOR/DME ELD
115.5
Chan **102**

APP CRS
049°

Rwy Idg
TDZE **260**
Apt Elev **277**

VOR/DME RWY 4

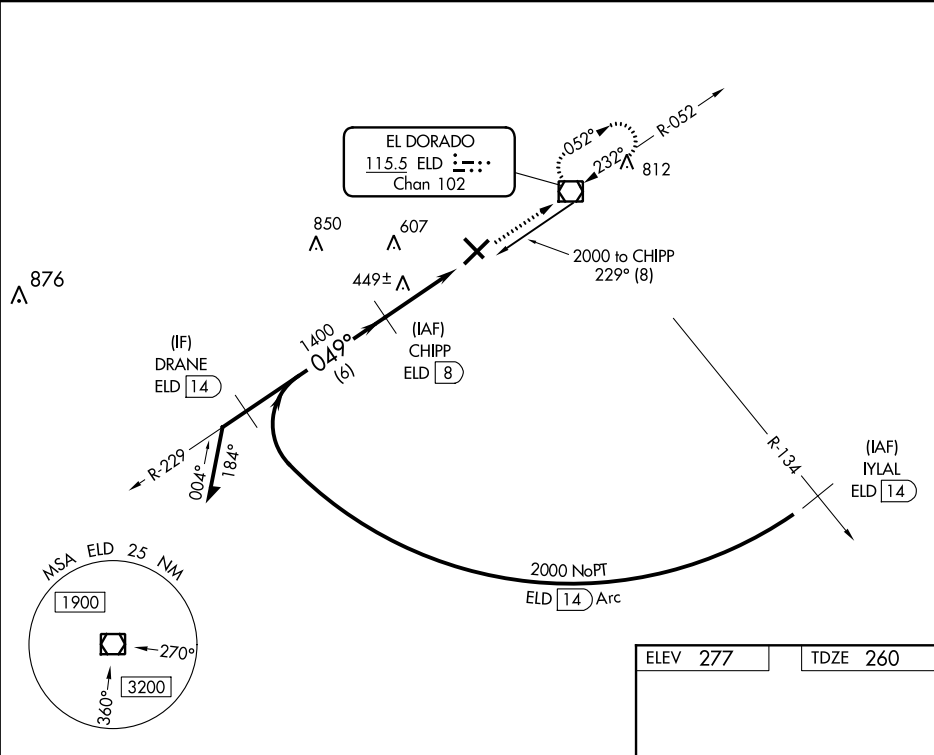
SOUTH ARKANSAS RGNL AT GOODWIN FIELD (ELD)

▼

Straight-in Rwy 4 NA at night, Circling Rwy 4, 13, 31 NA at night. Rwy 4 helicopter visibility reduction below 1 SM NA.

MISSED APPROACH: Climb to 2000 direct ELD VOR/DME and hold.

ASOS 118.325	FORT WORTH CENTER 128.2 269.1	UNICOM 123.0 (CTAF) 0
------------------------	---	---------------------------------



Remain within 10 NM

CHIPP ELD 8

2000

229°

049°

1400

2.97°

TCH 49

3.5 NM

ELD 4.5

2000

ELD

ELEV 277

TDZE 260

5100 x 100

0.7% UP

6601 x 1150

309

311

31

049° 3.5 NM from FAF

MIRL Rwy 13-31 0

HIRL Rwy 4-22 0

CATEGORY	A	B	C	D
S-4	700-1	440 (500-1)	700-1¼ 440 (500-1¼)	700-1½ 440 (500-1½)
CIRCLING	740-1	463 (500-1)	740-1½ 463 (500-1½)	840-2 563 (600-2)