

WAAS
CH **82105**
W18A

APP CRS
176°

Rwy Idg
TDZE
Apt Elev

5150
720
720

RNAV (GPS) RWY 18

OKMULGEE RGNL (OKM)

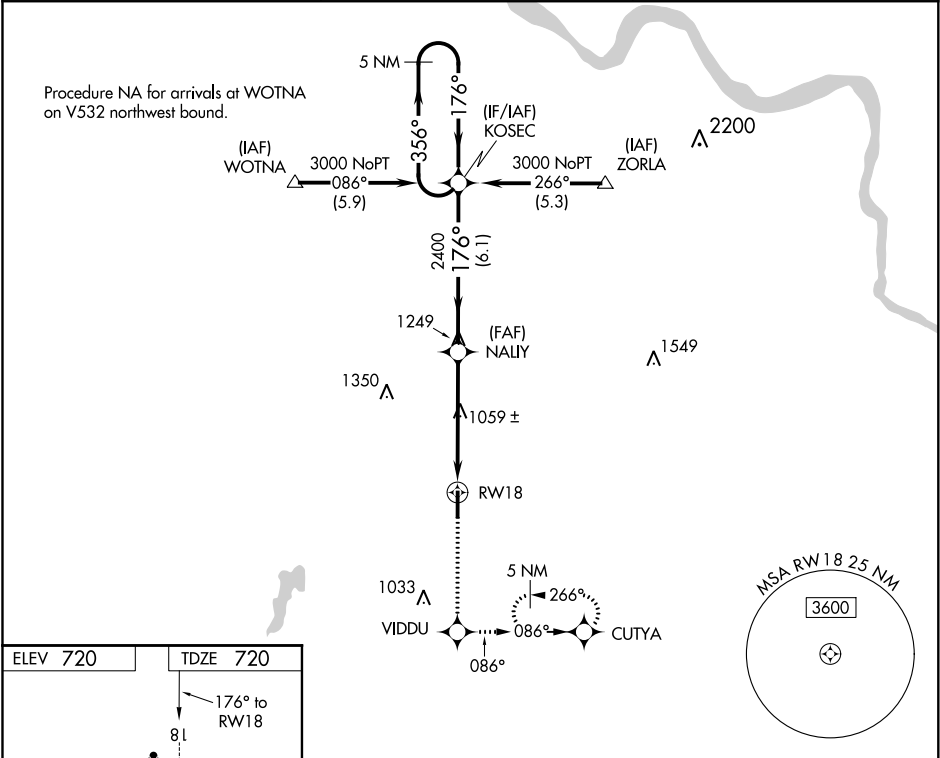
⚠

When local altimeter setting not received, use Tulsa Init altimeter setting: Increase LPV DA to 1050 feet; increase all MDAs 80 feet and visibility Cat C ¼ SM. DME/DME RNP-0.3 NA. VDP NA with Tulsa Init altimeter setting.

MALSR

MISSED APPROACH: Climb to 3000 direct VDDU and left turn via 086° track to CUTYA and hold, continue climb-in-hold to 3000.

AWOS-3 118.225	TULSA APP CON 119.85 338.3	UNICOM 123.0 (CTAF) 0
--------------------------	--------------------------------------	---------------------------------



ELEV 720

TDZE 720

MIRL Rwy 18-36 0

3000	VIDDU	CUTYA	KOSEC	5 NM Holding Pattern
↑	086° tr		356° → 3000	
*LNAV only.		*1.7 NM to RW18	NALLY	GP 3.00° TCH 51
RW18		2400	176°	
1.7 NM		3.3 NM	6.1 NM	
CATEGORY	A	B	C	D
LPV DA	970-½ 250 (300-½)			NA
LNAV MDA	1320-½ 600 (600-½)		1320-1 600 (600-1)	NA
CIRCLING	1320-1 600 (600-1)	1340-1 620 (700-1)	1340-1¾ 620 (700-1¾)	NA