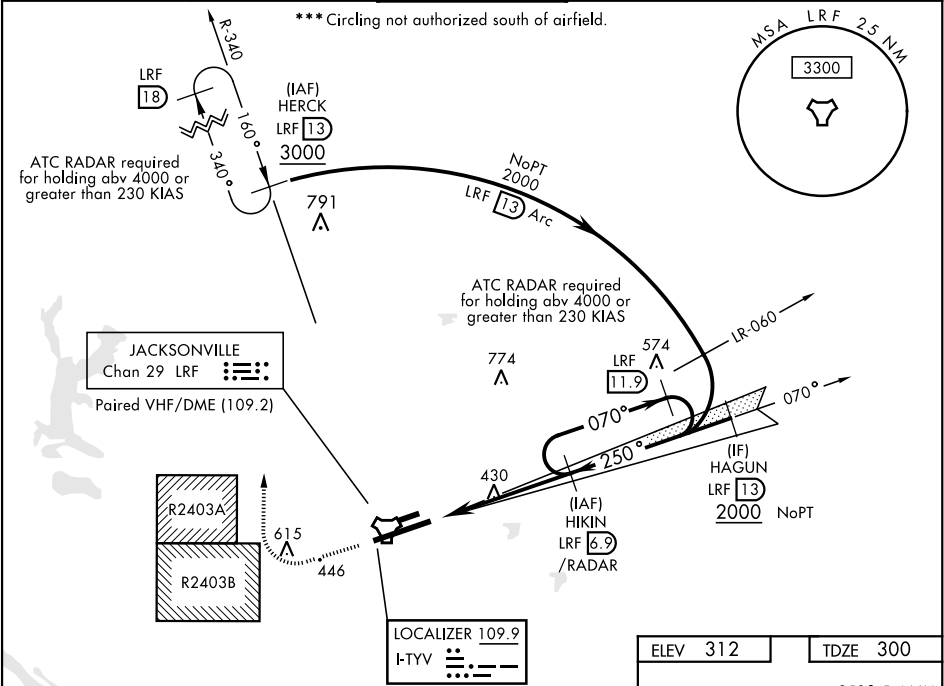


ILS or LOC RWY 25

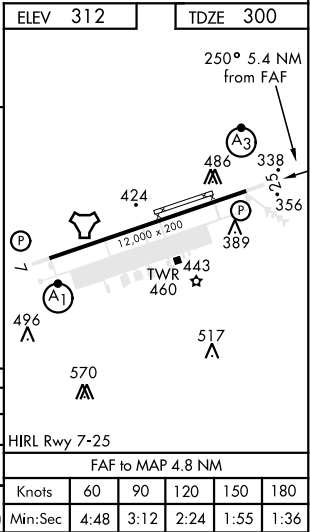
LOC I-TYV 109.9	APCH CRS 250°	Rwy Ldg TDZE Arpt Elev 12,000 300 312	AL-738 [USAF]	LITTLE ROCK AFB (KLRF)
RADAR or DME required. RADAR required when R-2403A / R2403B active.			SSALR 	MISSED APPROACH: Climb to 3000 then turn right climbing to 3000, intercept LRF TACAN R-340 to 13 DME (HERCK) and hold.
▼ When ALS inop, increase RVR to 40 and vis to ¾ mile. ** When ALS inop, increase CAT AB RVR to 55, vis to 1 mile; CAT CDE vis to 1¼ miles.				

ATIS ★ 119.175 251.1	LITTLE ROCK APP CON 119.5 306.2	LITTLE ROCK TOWER 120.6 269.075	GND CON 132.8 275.8	CLNC DEL 253.5
--------------------------------	---	---	-------------------------------	--------------------------



EMERG SAFE ALT 100 NM 4100

1300 ↑	3000 LRF R-340	HERCK LRF 13
VGSI and Glidepath angles not coincident		
TACAN	SATEK 2.1	HIKIN /RADAR 6.9



ILS or LOC RWY 25

SC-1, 03 DEC 2020 to 31 DEC 2020

SC-1, 03 DEC 2020 to 31 DEC 2020